

# THAP10 antibody



Catalog Number: 116038

## Product name

THAP10 antibody

## Immunogen

[Human THAP10 Recombinant protein \(His tag\)](#)

## Specificity

Human, Mouse; other species not tested.

## Antibody description

THAP10 Rabbit Polyclonal antibody. Positive WB detected in HeLa cells, mouse testis tissue, SMMC-7721 cells. Positive IF detected in HeLa cells. Observed molecular weight by Western-blot: 33 kDa

## Preparation

This antibody was obtained by immunization of THAP10 recombinant protein (Accession Number: NM\_020147). Purification method: Antigen affinity purified.

## Formulation

PBS with 0.02% sodium azide and 50% glycerol pH 7.3.

## Storage

Store at -20°C. DO NOT ALIQUOT

## Clonality

Polyclonal

## Ig Type

Rabbit IgG

## Applications

ELISA, WB, IF

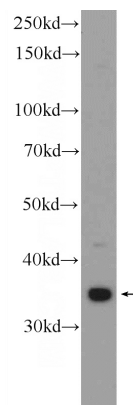
## Dilutions

Recommended Dilution:

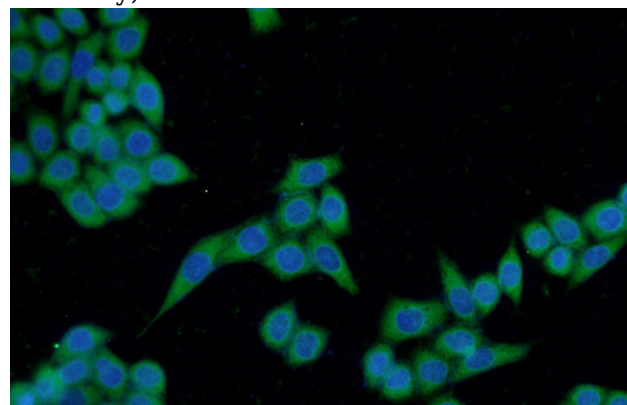
WB: 1:200-1:1000

IF: 1:20-1:200

## Validations



HeLa cells were subjected to SDS PAGE followed by western blot with Catalog No:116038(THAP10 Antibody) at dilution of 1:300



Immunofluorescent analysis of HeLa cells using Catalog No:116038(THAP10 Antibody) at dilution of 1:50 and Alexa Fluor 488-conjugated AffiniPure Goat Anti-Rabbit IgG(H+L)