

Rhesus DDR2/CD167b (Fc Tag) recombinant protein



Catalog Number: 501038

General Information

Protein Construction

A DNA sequence encoding the rhesus DDR2 (XP_001118219.1) (Met1-Arg399) was expressed with the Fc region of human IgG1 at the C-terminus.

Organism

Rhesus

Expression Host

Human Cells

QC Testing

Activity

1. Measured by its binding ability in a functional ELISA.

2. Immobilized Rat tail Collagen I at 10 µg/mL (100 µL/well) can bind Rhesus DDR2-Fc (Cat:501038).

The EC₅₀ of Rhesus DDR2-Fc (Cat:501038) is 0.23-0.55µg/mL.

Purity

> 95 % as determined by SDS-PAGE

Endotoxin

< 1.0 EU per µg of the protein as determined by the LAL method

Stability

Samples are stable for up to twelve months from date of receipt at -70°C

Predicted N terminal

Lys 22

Molecular Mass

The recombinant rhesus DDR2 comprises 619 amino acids and has a calculated molecular mass of 69.7 KDa.

Formulation

Lyophilized from sterile PBS, PH 7.4.

1. 5 % trehalose and mannitol are added as protectants before lyophilization.

2. Please contact us for any concerns or special requirements.

Usage Guide

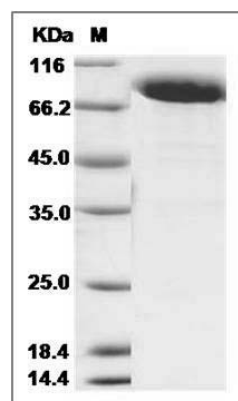
Storage

Store it under sterile conditions at -20°C to -80°C. It is recommended that the protein be aliquoted for optimal storage. Avoid repeated freeze-thaw cycles.

Reconstitution

Adding sterile water, prepare a stock solution of 0.25 mg/ml. Concentration is measured by UV-Vis.

SDS-PAGE



Cynomolgus DDR2 Kinase / CD167b Protein (Fc Tag) SDS-PAGE