

CTP synthase antibody



Catalog Number: 109728

Product name

CTP synthase antibody

IP: 1:200-1:2000

IHC: 1:50-1:500

Specificity

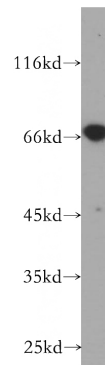
Human, Mouse, Rat; other species not tested.

IF: 1:10-1:100

Antibody description

CTP synthase Rabbit Polyclonal antibody. Positive IF detected in HepG2 cells. Positive IHC detected in human liver cancer tissue. Positive FC detected in HepG2 cells. Positive IP detected in HeLa cells. Positive WB detected in HeLa cells. Observed molecular weight by Western-blot: 67 kDa

Validations



Preparation

This antibody was obtained by immunization of CTP synthase recombinant protein (Accession Number: XM_024453553). Purification method: Antigen affinity purified.

HeLa cells were subjected to SDS PAGE followed by western blot with Catalog No:109728(CTPS antibody) at dilution of 1:500

Formulation

PBS with 0.02% sodium azide and 50% glycerol pH 7.3.

Storage

Store at -20°C. DO NOT ALIQUOT

Clonality

Polyclonal

Ig Type

Rabbit IgG

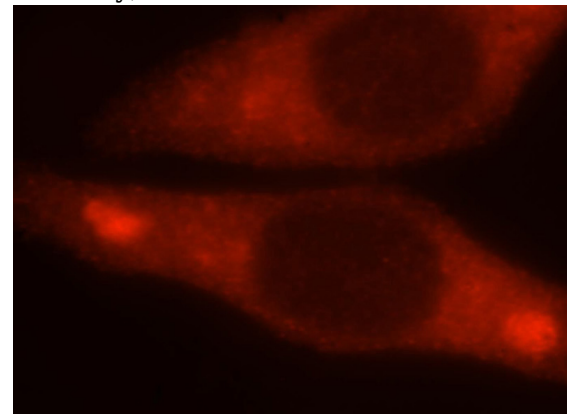
Applications

ELISA, WB, IF, FC, IP, IHC

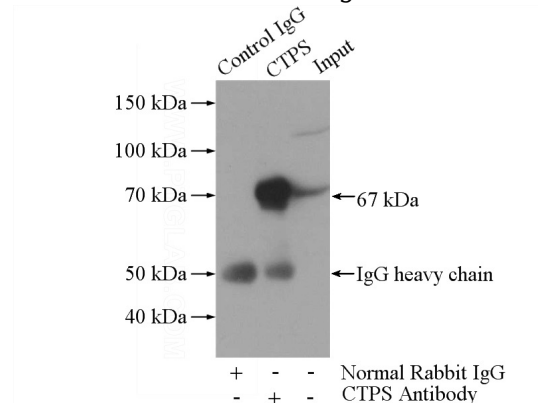
Dilutions

Recommended Dilution:

WB: 1:500-1:5000



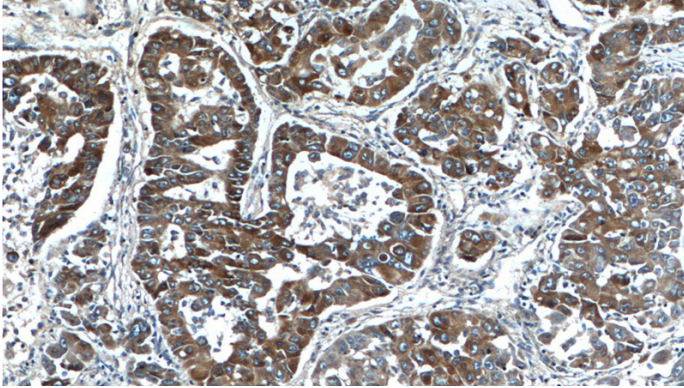
Immunofluorescent analysis of HepG2 cells, using CTPS antibody Catalog No:109728 at 1:25 dilution and Rhodamine-labeled goat anti-rabbit IgG (red).



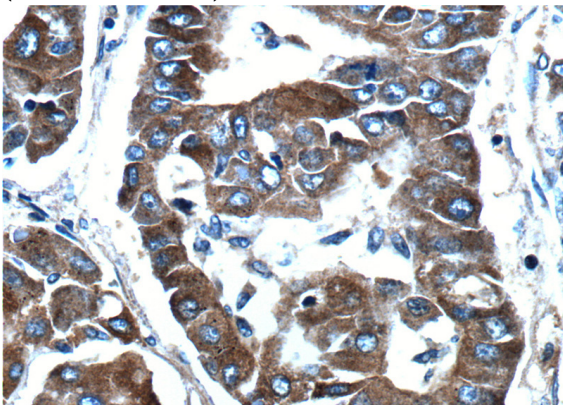
CTP synthase antibody

Catalog Number: 109728

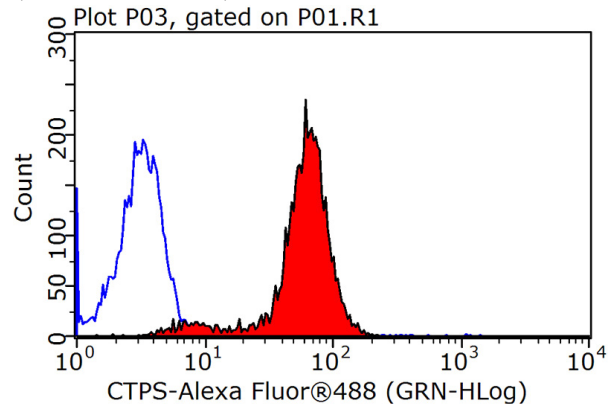
IP Result of anti-CTPS (IP:Catalog No:109728, 4ug; Detection:Catalog No:109728 1:500) with HeLa cells lysate 1200ug.



Immunohistochemistry of paraffin-embedded human liver cancer tissue slide using Catalog No:109728(CTPS Antibody) at dilution of 1:100 (under 10x lens).



Immunohistochemistry of paraffin-embedded human liver cancer tissue slide using Catalog No:109728(CTPS Antibody) at dilution of 1:100 (under 40x lens).



1X10⁶ HepG2 cells were stained with 0.2ug CTPS antibody (Catalog No:109728, red) and control antibody (blue). Fixed with 90% MeOH blocked with 3% BSA (30 min). Alexa Fluor 488-conjugated AffiniPure Goat Anti-Rabbit IgG(H+L) with dilution 1:1500.