

Anti-PAI-1 / SerpinE1 antibody



Catalog Number: 102728

Product name

Anti-PAI-1 / SerpinE1 antibody

Immunogen

[Human PAI-1 / SerpinE1 \(His Tag\) recombinant protein](#)

Specificity

Human SerpinE1 / PLANH1 / PAI1

Antibody description

Rabbit polyclonal to PAI-1 / SerpinE1

Preparation

Produced in rabbits immunized with purified, recombinant Human SerpinE1 (rh SerpinE1; NP_000593.1; Met 1-Pro 402). Total IgG was purified by Protein A affinity chromatography

Formulation

0.2 µm filtered solution in PBS with 5% trehalose

Storage

This antibody can be stored at 2°C-8°C for one month without detectable loss of activity. Antibody products are stable for twelve months from date of receipt when stored at -20°C to -80°C.

Preservative-Free.

Sodium azide is recommended to avoid contamination (final concentration 0.05%-0.1%). It is toxic to cells and should be disposed of properly. Avoid repeated freeze-thaw cycles.

Clonality

Polyclonal

Ig Type

Rabbit IgG

Applications

ELISA, WB

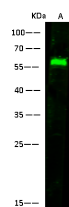
Dilutions

WB: 5-10 µg/ml

ELISA: 0.5-1 µg/mL

This antibody can be used at 0.5-1 µg/mL with the appropriate secondary reagents to detect Human SerpinE1. The detection limit for Human SerpinE1 is approximately 0.00975 ng/well.

Validations



Lanes	A
Items	
Sample (whole cell lysate)	HepG2
Sample Volume (µg/lane)	30
Gel	13%SDS-PAGE reducing gel
Recommended Concentration	5-10 µg/ml
Secondary Antibody	Dylight 800-labeled Antibody To Rabbit IgG (H+L), at 1:5000 dilution
Developed using Odyssey imaging system	
Explanation	Predicted band size : 43kDa Observed band size : 57 kDa

SerpinE1 / PAI-1 Antibody, Rabbit PAb, Western blot