

TWF2 Polyclonal Antibody



Catalog Number: 161728

Product name

TWF2 Polyclonal Antibody

Specificity

Human, Mouse

Antibody description

Polyclonal antibody to TWF2

Preparation

Antigen: Recombinant fusion protein containing a sequence corresponding to amino acids 1-369 of human TWF2 (NP_009215.1).

Formulation

PBS with 0.02% sodium azide, 50% glycerol, pH7.3.

Storage

Store at -20°C. Avoid freeze / thaw cycles.

Clonality

Polyclonal

Ig Type

Rabbit IgG

Applications

WB, IHC, IP

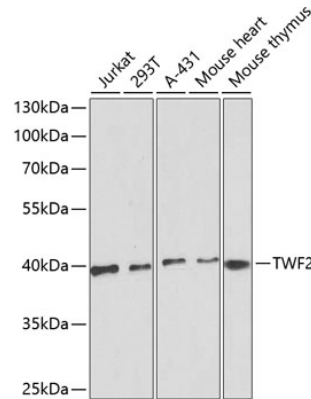
Dilutions

WB 1:500 - 1:2000

IHC 1:50 - 1:200

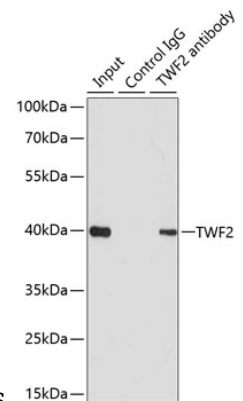
IP 1:20 - 1:50

Validations



Western blot - TWF2 Polyclonal Antibody

Western blot analysis of extracts of various cell lines, using TWF2 antibody at 1:1000 dilution. Secondary antibody: HRP Goat Anti-Rabbit IgG (H+L) at 1:10000 dilution. Lysates/proteins: 25ug per lane. Blocking buffer: 3% nonfat dry milk in TBST. Detection: ECL



Basic Kit .Exposure time: 180s.

Immunoprecipitation - TWF2 Polyclonal Antibody

Immunoprecipitation analysis of 200ug extracts of 293T cells using 1ug TWF2 antibody . Western blot was performed from the immunoprecipitate using TWF2 antibody at a dilution of 1:1000.