

Anti-Cathepsin S/CTSS antibody



Catalog Number: 101328

Product name

Anti-Cathepsin S/CTSS antibody

Immunogen

[Human Cathepsin S/CTSS \(His Tag\) recombinant protein](#)

Specificity

Human Cathepsin S / CTSS

Antibody description

Rabbit polyclonal to Cathepsin S/CTSS

Preparation

Produced in rabbits immunized with purified, recombinant Human Cathepsin S / CTSS (rh Cathepsin S / CTSS; NP_004070.3; Met1-Ile331). Cathepsin S / CTSS specific IgG was purified by Human Cathepsin S / CTSS affinity chromatography.

Formulation

0.2 µm filtered solution in PBS

Storage

This antibody can be stored at 2°C-8°C for one month without detectable loss of activity. Antibody products are stable for twelve months from date of receipt when stored at -20°C to -80°C.

Preservative-Free.

Sodium azide is recommended to avoid contamination (final concentration 0.05%-0.1%). It is toxic to cells and should be disposed of properly. Avoid repeated freeze-thaw cycles.

Clonality

Polyclonal

Ig Type

Rabbit IgG

Applications

ELISA, IHC-P

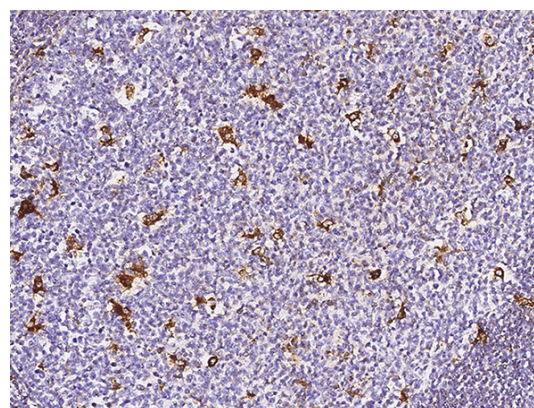
Dilutions

ELISA: 0.1-0.2 µg/mL

This antibody can be used at 0.1-0.2 µg/mL with the appropriate secondary reagents to detect Human Cathepsin S / CTSS. The detection limit for Human Cathepsin S / CTSS is < 0.039 ng/well.

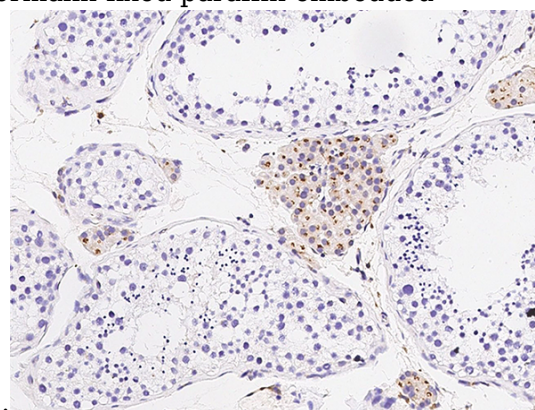
IHC-P: 0.1-2 µg/mL

Validations



Cathepsin S / CTSS Antibody, Rabbit PAb, Antigen Affinity Purified, Immunohistochemistry

Immunochemical staining of human CTSS in human tonsil with rabbit polyclonal antibody (0.3 µg/mL, formalin-fixed paraffin embedded



sections).

Cathepsin S / CTSS Antibody, Rabbit PAb, Antigen Affinity Purified, Immunohistochemistry

Anti-Cathepsin S/CTSS antibody



Catalog Number: 101328

Immunochemical staining of human CTSS in human testis with rabbit polyclonal antibody (0.3 $\mu\text{g}/\text{mL}$, formalin-fixed paraffin embedded sections).