

# ENT1 antibody

Catalog Number: 110328

## Product name

ENT1 antibody

## Specificity

Human, Mouse, Rat; other species not tested.

## Antibody description

ENT1 Rabbit Polyclonal antibody. Positive IHC detected in human breast cancer tissue. Positive IP detected in mouse brain tissue. Positive WB detected in mouse brain tissue, human liver tissue, human lung tissue, human spleen tissue, mouse kidney tissue, mouse liver tissue, mouse lung tissue, mouse testis tissue. Observed molecular weight by Western-blot: 62 kDa

## Preparation

This antibody was obtained by immunization of ENT1 recombinant protein (Accession Number: XM\_005248881). Purification method: Antigen affinity purified.

## Formulation

PBS with 0.1% sodium azide and 50% glycerol pH 7.3.

## Storage

Store at -20°C. DO NOT ALIQUOT

## Clonality

Polyclonal

## Ig Type

Rabbit IgG

## Applications

ELISA, WB, IHC, IP

## Dilutions

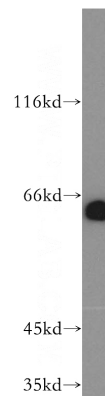
Recommended Dilution:

WB: 1:200-1:2000

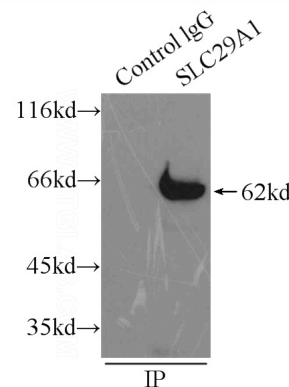
IP: 1:200-1:1000

IHC: 1:20-1:200

## Validations



mouse brain tissue were subjected to SDS PAGE followed by western blot with Catalog No:110328(ENT1 antibody) at dilution of 1:500

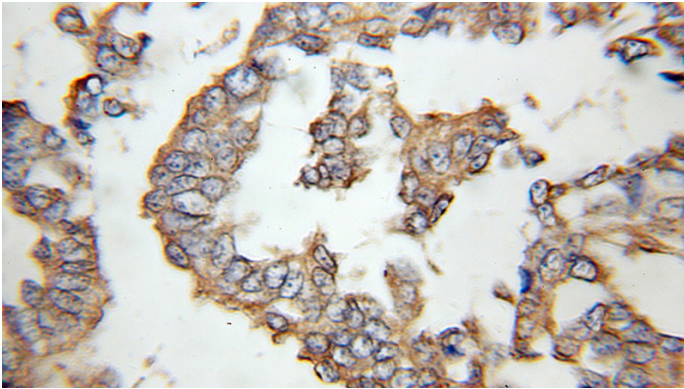


IP Result of anti-ENT1 (IP:Catalog No:110328, 3ug; Detection:Catalog No:110328 1:400) with mouse brain tissue lysate 8000ug.

# ENT1 antibody

Catalog Number: 110328

---



Immunohistochemical of paraffin-embedded human breast cancer using Catalog No:110328(ENT1 antibody) at dilution of 1:100 (under 10x lens)