

Human GGCT/C7orf24/CRF21 (His tag) recombinant protein



Catalog Number: 518628

General Information

Gene Name Synonym

Gamma-Glutamylcyclotransferase, Cytochrome C-Releasing Factor 21, GGCT, C7orf24, CRF21

Protein Construction

A DNA sequence encoding the Human GGCT/C7orf24/CRF21 Met1-Leu188 is expressed with a 6His tag at the N-terminus.

Organism

Human

Expression Host

E. coli

QC Testing

Purity

>95% as determined by SDS-PAGE.

Endotoxin

<1.0 EU per µg protein as determined by the LAL method.

Stability

Store for up to 6 months at -20°C

Formulation

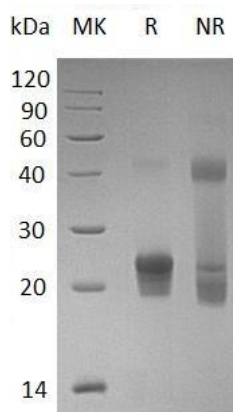
Supplied as a 0.2 µm filtered solution of 20mM TrisHCl, pH 8.0.

Usage Guide

Storage

Store at <-20°C, minimize freeze-thaw cycles.

SDS-PAGE



Human GGCT/C7orf24/CRF21 (His tag)
recombinant protein