

# C1D antibody

Catalog Number: 108628

---

**Product name**

C1D antibody

**Specificity**

Human, Mouse, Rat; other species not tested.

**Antibody description**

C1D Rabbit Polyclonal antibody. Positive IHC detected in human prostate cancer tissue.

**Preparation**

This antibody was obtained by immunization of C1D recombinant protein (Accession Number: NM\_006333). Purification method: Antigen affinity purified.

**Formulation**

PBS with 0.1% sodium azide and 50% glycerol pH 7.3.

**Storage**

Store at -20°C. DO NOT ALIQUOT

**Clonality**

Polyclonal

**Ig Type**

Rabbit IgG

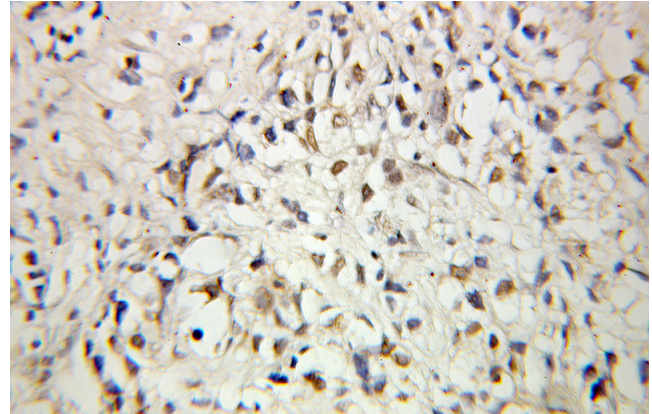
**Applications**

ELISA, IHC

**Dilutions**

Recommended Dilution:

IHC: 1:20-1:200

**Validations**

Immunohistochemical of paraffin-embedded human prostate cancer using Catalog No:108628(C1D antibody) at dilution of 1:100 (under 10x lens)