

# ST6GAL1 antibody



Catalog Number: 115628

## Product name

ST6GAL1 antibody

## Specificity

Human, Mouse; other species not tested.

## Antibody description

ST6GAL1 Rabbit Polyclonal antibody. Positive IP detected in Raji cells. Positive WB detected in U-937 cells, human liver tissue, mouse skeletal muscle tissue, mouse spleen tissue, Raji cells. Observed molecular weight by Western-blot: 50 kDa

## Preparation

This antibody was obtained by immunization of ST6GAL1 recombinant protein (Accession Number: XM\_017007065). Purification method: Antigen affinity purified.

## Formulation

PBS with 0.02% sodium azide and 50% glycerol pH 7.3.

## Storage

Store at -20°C. DO NOT ALIQUOT

## Clonality

Polyclonal

## Ig Type

Rabbit IgG

## Applications

ELISA, IP, WB

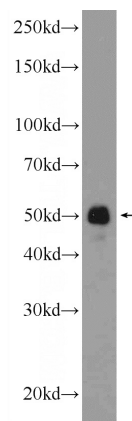
## Dilutions

Recommended Dilution:

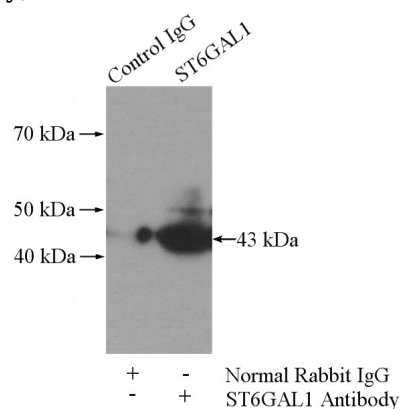
WB: 1:200-1:2000

IP: 1:200-1:2000

## Validations



U-937 cells were subjected to SDS PAGE followed by western blot with Catalog No:115628(ST6GAL1 Antibody) at dilution of 1:600



IP Result of anti-ST6GAL1 (IP:Catalog No:115628, 4ug; Detection:Catalog No:115628 1:600) with Raji cells lysate 2800ug.