

# IFNGR1 antibody

Catalog Number: 111628

## Product name

IFNGR1 antibody

IP: 1:200-1:2000

IHC: 1:20-1:200

## Specificity

Human; other species not tested.

## Antibody description

IFNGR1 Rabbit Polyclonal antibody. Positive IP detected in HepG2 cells. Positive WB detected in HepG2 cells. Positive IHC detected in human pancreas cancer tissue. Positive FC detected in HepG2 cells. Observed molecular weight by Western-blot: 90 kDa

## Preparation

This antibody was obtained by immunization of IFNGR1 recombinant protein (Accession Number: NM\_000416). Purification method: Antigen affinity purified.

## Formulation

PBS with 0.1% sodium azide and 50% glycerol pH 7.3.

## Storage

Store at -20°C. DO NOT ALIQUOT

## Clonality

Polyclonal

## Ig Type

Rabbit IgG

## Applications

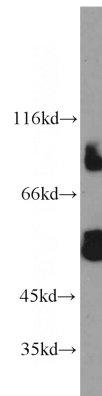
ELISA, WB, IHC, IP, FC

## Dilutions

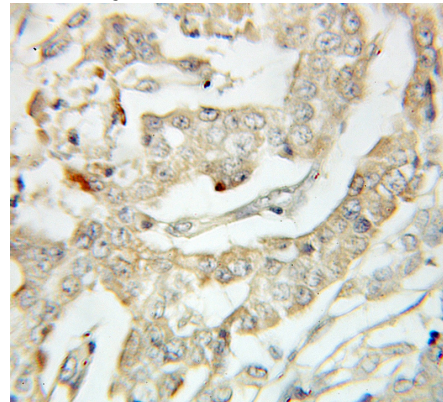
Recommended Dilution:

WB: 1:200-1:2000

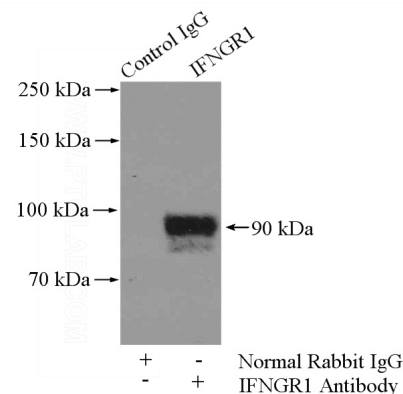
## Validations



HepG2 cells were subjected to SDS PAGE followed by western blot with Catalog No:111628(IFNGR1 antibody) at dilution of 1:500



Immunohistochemical of paraffin-embedded human pancreas cancer using Catalog No:111628(IFNGR1 antibody) at dilution of 1:100 (under 10x lens)



IP Result of anti-IFNGR1 (IP:Catalog No:111628,

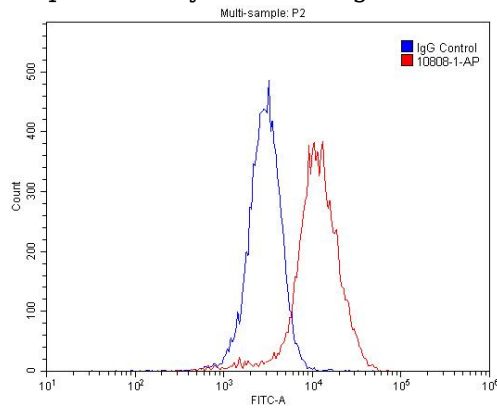
# IFNGR1 antibody



Catalog Number: 111628

---

4ug; Detection:Catalog No:111628 1:500) with HepG2 cells lysate 1800ug.



1X10<sup>6</sup> HepG2 cells were stained with .2ug IFNGR1 antibody (Catalog No:111628, red) and control antibody (blue). Fixed with 4% PFA blocked with 3% BSA (30 min). Alexa Fluor 488-conjugated AffiniPure Goat Anti-Rabbit IgG(H+L) with dilution 1:1500.