

# Human LRPAP1 (His Tag) recombinant protein



Catalog Number: 500628

## General Information

### Gene Name Synonym

Low density lipoprotein receptor-related protein-associated protein 1

### Protein Construction

A DNA sequence encoding the human LRPAP1 (NP\_002328.1) (Tyr 35-Leu 357) was expressed, fused with a signal peptide at the N-terminus and a polyhistidine tag at the C-terminus.

### Organism

Human

### Expression Host

Human Cells

## QC Testing

### Activity

Measured by its binding ability in a functional ELISA. Immobilized human LRPAP1 at 0.5 µg/ml can bind human VLDLR with a range of 3.2-400 ng/ml.

### Purity

> 92 % as determined by SDS-PAGE

### Endotoxin

< 1.0 EU per µg of the protein as determined by the LAL method

### Stability

Samples are stable for up to twelve months from date of receipt at -70°C

### Predicted N terminal

Tyr 35

## Molecular Mass

The secreted recombinant human LRPAP1 consists of 334 amino acids with the predicted molecular mass of 39.2 kDa. As a result of glycosylation, rh LRPAP1 migrates as an approximately 43 kDa band in SDS-PAGE under reducing conditions.

## Formulation

Lyophilized from sterile PBS, pH 7.4

1. 5 % trehalose and mannitol are added as protectants before lyophilization.

2. Please contact us for any concerns or special requirements.

## Usage Guide

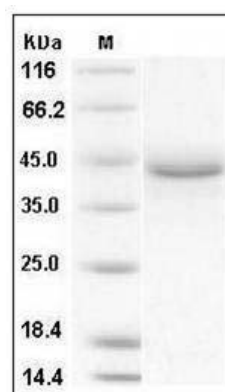
### Storage

Store it under sterile conditions at -20°C to -80°C. It is recommended that the protein be aliquoted for optimal storage. Avoid repeated freeze-thaw cycles.

### Reconstitution

Adding sterile water, prepare a stock solution of 0.25 mg/ml. Concentration is measured by UV-Vis.

## SDS-PAGE



Human LRPAP1 / A2MRAP Protein (His Tag) SDS-PAGE