

Human ALDH1A2/RALDH2 (His tag) recombinant protein



Catalog Number: 519228

General Information

Gene Name Synonym

Aldehyde dehydrogenase family 1 member A2, Retinaldehyde-specific dehydrogenase type 2, RALDH(II), Retinal dehydrogenase 2, ALDH1A2, RALDH2

Protein Construction

A DNA sequence encoding the Human ALDH1A2/RALDH2 Met1-Ser518 is expressed with a 6His tag at the N-terminus.

Organism

Human

Expression Host

E. coli

QC Testing

Purity

>95% as determined by SDS-PAGE.

Endotoxin

<1.0 EU per μg protein as determined by the LAL

method.

Stability

Store for up to 6 months at -20°C

Formulation

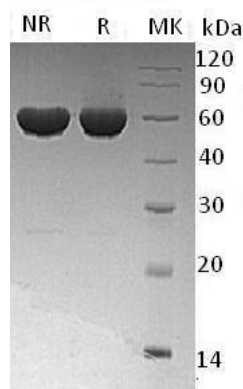
Supplied as a $0.2\ \mu\text{m}$ filtered solution of 20mM TrisHCl, 150mM NaCl, pH 7.5, 20% Glycerol.

Usage Guide

Storage

Store at $<-20^{\circ}\text{C}$, minimize freeze-thaw cycles.

SDS-PAGE



Human ALDH1A2/RALDH2 (His tag) recombinant protein