

# Anti-CDT1/DUP Rabbit antibody



Catalog Number: 167228

## Product name

Anti-CDT1/DUP Rabbit antibody

## Specificity

Human

## Antibody description

CDT1/DUP Rabbit polyclonal antibody

## Preparation

Antigen: Recombinant protein of human CDT1

## Formulation

Supplied in 50nM Tris-Glycine(pH 7.4), 0.15M NaCl, 40%Glycerol, 0.01% sodium azide and 0.05% BSA.

## Storage

Store at -20°C. Stable for 12 months from date of receipt.

## Clonality

Polyclonal

## Ig Type

Rabbit IgG

## Applications

WB, IHC-P, ICC/IF, FC, IP

## Dilutions

WB: 1/1000

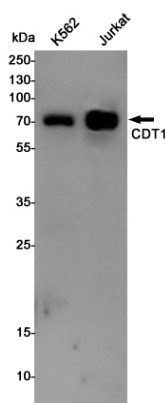
IHC: 1/20

ICC/IF: 1/20

FC: 1/20

IP: 1/20

## Validations



Western blot detection of CDT1 in K562, Jurkat cell lysates using CDT1 Rabbit pAb(1:1000 diluted). Predicted band size: 60KDa. Observed band size: 65KDa.