

# PRPF3 antibody

Catalog Number: 114228

## Product name

PRPF3 antibody

## Specificity

Human, Mouse, Rat; other species not tested.

## Antibody description

PRPF3 Rabbit Polyclonal antibody. Positive WB detected in Y79 cells, HepG2 cells, L02 cells, mouse brain tissue, mouse liver tissue. Positive IP detected in mouse liver tissue. Observed molecular weight by Western-blot: 90 kDa or 78 kDa

## Preparation

This antibody was obtained by immunization of PRPF3 recombinant protein (Accession Number: XM\_047433995). Purification method: Antigen affinity purified.

## Formulation

PBS with 0.1% sodium azide and 50% glycerol pH 7.3.

## Storage

Store at -20°C. DO NOT ALIQUOT

## Clonality

Polyclonal

## Ig Type

Rabbit IgG

## Applications

ELISA, WB, IP

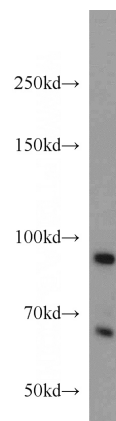
## Dilutions

Recommended Dilution:

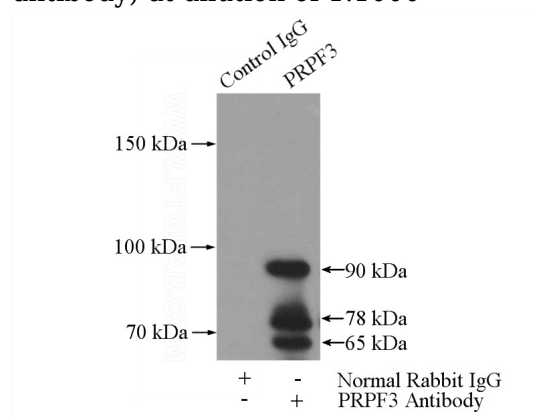
WB: 1:500-1:5000

IP: 1:200-1:2000

## Validations



Y79 cells were subjected to SDS PAGE followed by western blot with Catalog No:114228 (PRPF3 antibody) at dilution of 1:1000



IP Result of anti-PRPF3 (IP: Catalog No:114228, 5ug; Detection: Catalog No:114228 1:500) with mouse liver tissue lysate 4000ug.