

LIMK1 antibody

Catalog Number: 112228

Product name

LIMK1 antibody

Specificity

Human, Mouse, Rat; other species not tested.

Antibody description

LIMK1 Rabbit Polyclonal antibody. Positive IHC detected in human heart tissue, human brain tissue. Positive IP detected in HeLa cells. Positive WB detected in HeLa cells. Observed molecular weight by Western-blot: 73 kDa, 33 kDa

Preparation

This antibody was obtained by immunization of Peptide (Accession Number: NM_002314). Purification method: Antigen affinity purified.

Formulation

PBS with 0.02% sodium azide and 50% glycerol pH 7.3.

Storage

Store at -20°C. DO NOT ALIQUOT

Clonality

Polyclonal

Ig Type

Rabbit IgG

Applications

ELISA, WB, IHC, IP

Dilutions

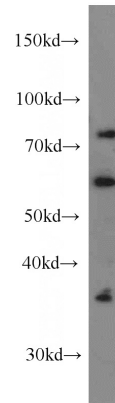
Recommended Dilution:

WB: 1:200-1:2000

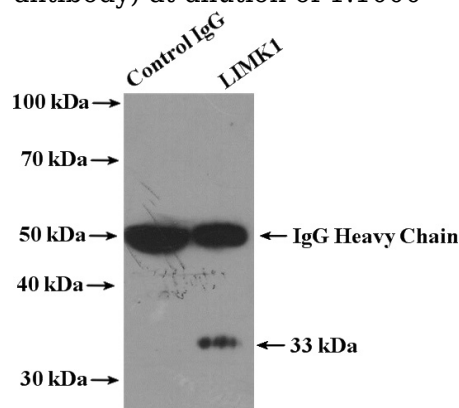
IP: 1:200-1:2000

IHC: 1:20-1:200

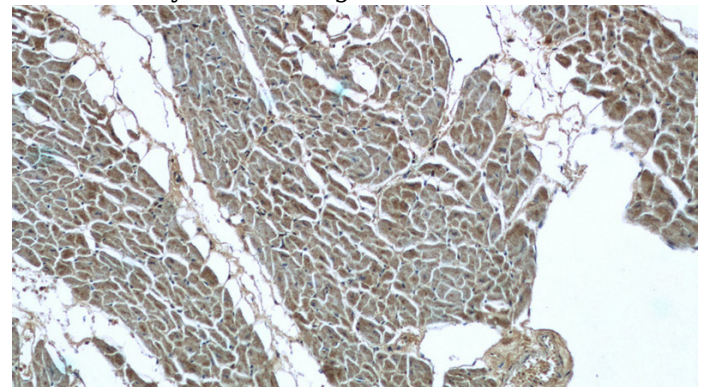
Validations



HeLa cells were subjected to SDS PAGE followed by western blot with Catalog No:112228(LIMK1 antibody) at dilution of 1:1000



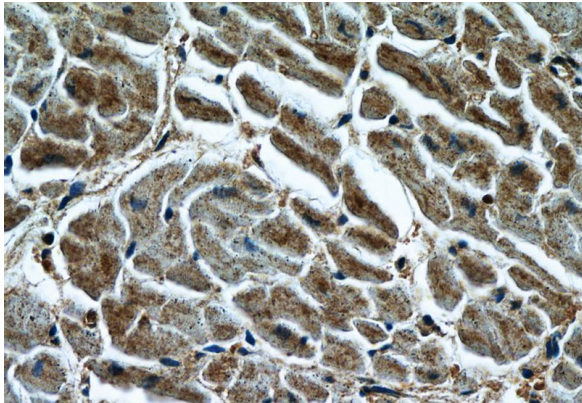
IP Result of anti-LIMK1 (IP:Catalog No:112228, 4ug; Detection:Catalog No:112228 1:800) with HeLa cells lysate 1600ug.



Immunohistochemistry of paraffin-embedded human heart tissue slide using Catalog No:112228(LIMK1 Antibody) at dilution of 1:200 (under 10x lens)

LIMK1 antibody

Catalog Number: 112228



Immunohistochemistry of paraffin-embedded human heart tissue slide using Catalog No:112228(LIMK1 Antibody) at dilution of 1:200 (under 40x lens)