

# GTF2A2 antibody



Catalog Number: 111228

## Product name

GTF2A2 antibody

## Specificity

Human, Mouse, Rat; other species not tested.

## Antibody description

GTF2A2 Rabbit Polyclonal antibody. Positive WB detected in mouse testis tissue, HeLa cells. Positive IHC detected in human prostate cancer tissue. Observed molecular weight by Western-blot: 12kd

## Preparation

This antibody was obtained by immunization of GTF2A2 recombinant protein (Accession Number: NM\_001320929). Purification method: Antigen affinity purified.

## Formulation

PBS with 0.1% sodium azide and 50% glycerol pH 7.3.

## Storage

Store at -20°C. DO NOT ALIQUOT

## Clonality

Polyclonal

## Ig Type

Rabbit IgG

## Applications

ELISA, WB, IHC

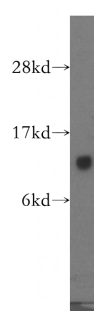
## Dilutions

Recommended Dilution:

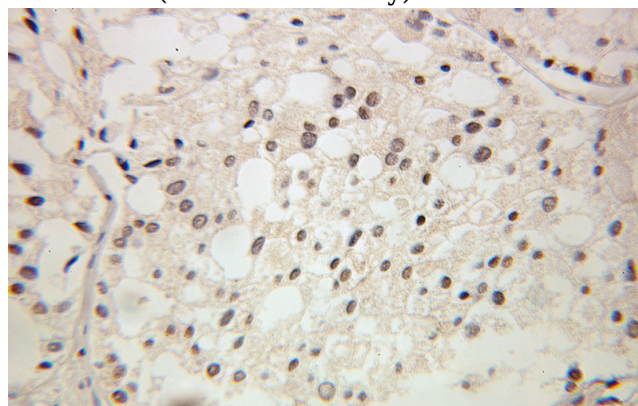
WB: 1:200-1:1000

IHC: 1:20-1:200

## Validations



mouse testis tissue were subjected to SDS PAGE followed by western blot with Catalog No:111228(GTF2A2 antibody) at dilution of 1:300



Immunohistochemical of paraffin-embedded human prostate cancer using Catalog No:111228(GTF2A2 antibody) at dilution of 1:100 (under 25x lens)