

Human CD48/SLAMF2 (Fc Tag) recombinant protein



Catalog Number: 501228

General Information

Gene Name Synonym

B-lymphocyte activation marker BLAST-1; BCM1 surface antigen; Leukocyte antigen MEM-102; SLAM family member 2; Signaling lymphocytic activation molecule 2; TCT.1

Protein Construction

A DNA sequence encoding the human CD48 (NP_001769.2) (Met1-Ser220) was expressed with the Fc region of human IgG1 at the C-terminus.

Organism

Human

Expression Host

Human Cells

QC Testing

Activity

1. Measured by its binding ability in a functional ELISA.
2. Immobilized human 2B4-His (Cat:504221), at 10 µg/mL (100 µL/well) can bind human CD48-Fc. The EC₅₀ of human CD48-Fc is 0.03-0.06µg/mL.

Purity

> 90 % as determined by SDS-PAGE

Endotoxin

< 1.0 EU per µg of the protein as determined by the LAL method

Stability

Samples are stable for up to twelve months from date of receipt at -70°C

Predicted N terminal

Gln 27

Molecular Mass

The recombinant human CD48/Fc comprises 432 amino acids and has a predicted molecular mass of 49.1 kDa. The apparent molecular mass of the protein is approximately 64.5 kDa in SDS-PAGE under reducing conditions.

Formulation

Lyophilized from sterile PBS, pH 7.4.

1. 5 % trehalose and mannitol are added as protectants before lyophilization.
2. Please contact us for any concerns or special requirements.

Usage Guide

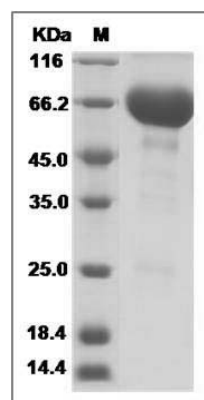
Storage

Store it under sterile conditions at -20°C to -80°C. It is recommended that the protein be aliquoted for optimal storage. Avoid repeated freeze-thaw cycles.

Reconstitution

Adding sterile water, prepare a stock solution of 0.25 mg/ml. Concentration is measured by UV-Vis.

SDS-PAGE



Human CD48 / SLAMF2 / BCM1 Protein (Fc Tag)
SDS-PAGE