

# Human KLK8/Kallikrein 8 (His Tag) recombinant protein



Catalog Number: 500228

## General Information

### Gene Name Synonym

Neuropsin; Ovasin; Serine protease 19; Serine protease TADG-14; Tumor-associated differentially expressed gene 14 protein

### Protein Construction

A DNA sequence encoding the human KLK8 isoform 1 (O60259-1) (Met 1-Gly 260) was expressed, with a polyhistidine tag at the C-terminus.

### Organism

Human

### Expression Host

Human Cells

## QC Testing

### Activity

Measured by its ability to cleave the fluorogenic peptide substrate BocVPRAMC(Catalog # ES011). The specific activity is > 400pmoles/min/ $\mu$ g

### Purity

> 98 % as determined by SDS-PAGE

### Endotoxin

< 1.0 EU per  $\mu$ g of the protein as determined by the LAL method

### Stability

Samples are stable for up to twelve months from date of receipt at -70°C

### Predicted N terminal

Gln 29

## Molecular Mass

The recombinant human KLK8 consists of 243 amino acids and predicts a molecular mass of 26.4 kDa. In SDS-PAGE under reducing conditions, the apparent molecular mass of rhKLK8 is approximately 36 kDa due to glycosylation.

## Formulation

- Lyophilized from sterile PBS, pH 7.4
1. 5 % trehalose and mannitol are added as protectants before lyophilization.
  2. Please contact us for any concerns or special requirements.

## Usage Guide

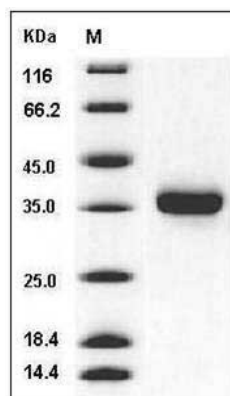
### Storage

Store it under sterile conditions at -20°C to -80°C. It is recommended that the protein be aliquoted for optimal storage. Avoid repeated freeze-thaw cycles.

## Reconstitution

Adding sterile water, prepare a stock solution of 0.25 mg/ml. Concentration is measured by UV-Vis.

## SDS-PAGE



Human KLK-8 / Kallikrein-8 Protein (His Tag)  
SDS-PAGE