

# CAMSAP1L1 antibody



Catalog Number: 108928

## Product name

CAMSAP1L1 antibody

## Specificity

Human, Mouse, Rat; other species not tested.

## Antibody description

CAMSAP1L1 Rabbit Polyclonal antibody. Positive IP detected in PC-3 cells. Positive WB detected in mouse brain tissue, HeLa cells, PC-3 cells. Positive IHC detected in human kidney tissue, human heart tissue, human lung tissue, human ovary tissue, human placenta tissue, human skin tissue, human spleen tissue, human testis tissue. Observed molecular weight by Western-blot: 168 kDa

## Preparation

This antibody was obtained by immunization of CAMSAP1L1 recombinant protein (Accession Number: BC065508). Purification method: Antigen affinity purified.

## Formulation

PBS with 0.02% sodium azide and 50% glycerol pH 7.3.

## Storage

Store at -20°C. DO NOT ALIQUOT

## Clonality

Polyclonal

## Ig Type

Rabbit IgG

## Applications

ELISA, WB, IHC, IP

## Dilutions

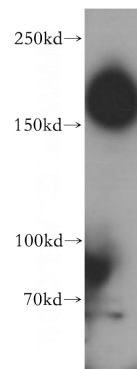
Recommended Dilution:

WB: 1:500-1:5000

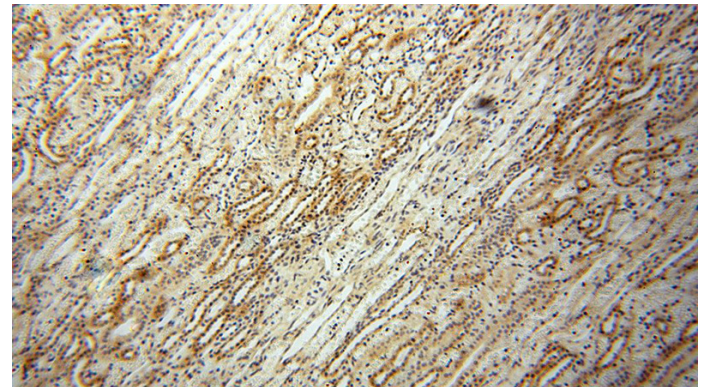
IP: 1:1000-1:10000

IHC: 1:20-1:200

## Validations



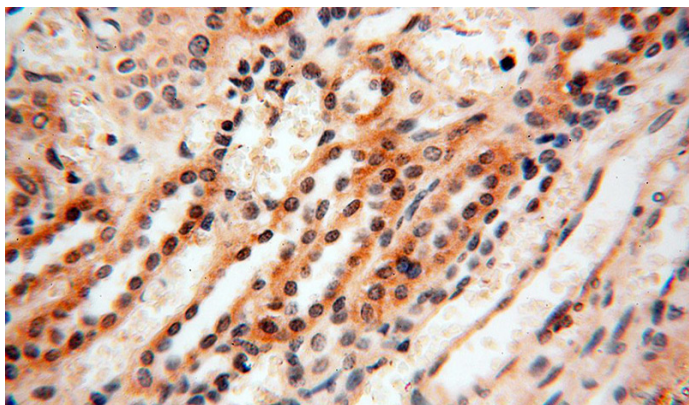
mouse brain tissue were subjected to SDS PAGE followed by western blot with Catalog No:108928(CAMSAP1L1 antibody) at dilution of 1:500



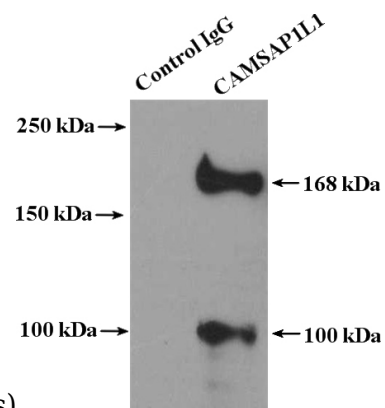
Immunohistochemical of paraffin-embedded human kidney using Catalog No:108928(CAMSAP1L1 antibody) at dilution of 1:100 (under 10x lens)

# CAMSAP1L1 antibody

Catalog Number: 108928



Immunohistochemical of paraffin-embedded human kidney using Catalog No:108928(CAMSAP1L1 antibody) at dilution of



1:100 (under 40x lens)

IP Result of anti-CAMSAP1L1 (IP:Catalog No:108928, 4ug; Detection:Catalog No:108928 1:3000) with PC-3 cells lysate 5000ug.