

Anti-SF3A3 Rabbit antibody



Catalog Number: 167928

Product name

Anti-SF3A3 Rabbit antibody

Specificity

Human, Mouse, Rat

Antibody description

SF3A3 Rabbit monoclonal antibody

Preparation

Antigen: A synthetic peptide of human SF3A3

Formulation

50nM Tris-Glycine(pH 7.4), 0.15M NaCl,
40%Glycerol, 0.01% sodium azide and 0.05% BSA

Storage

Store at 4°C short term. Store at -20°C long term.
Avoid freeze / thaw cycle.

Clonality

Monoclonal

Ig Type

Rabbit IgG

Applications

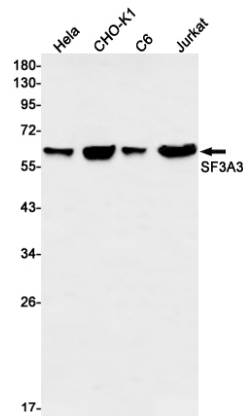
WB, FC

Dilutions

WB: 1/1000-1/5000

FC: 1/20

Validations



Western blot detection of SF3A3 in HeLa,CHO-K1,C6,Jurkat cell lysates using SF3A3 Rabbit mAb(1:1000 diluted).Predicted band size:59kDa.Observed band size:59kDa.