

# Anti-IL-2 antibody



Catalog Number: 105928

## Product name

Anti-IL-2 antibody

## Immunogen

[Canine IL-2 \(147 Cys/Ser\) recombinant protein](#)

## Specificity

Canine IL-2

## Antibody description

Rabbit polyclonal to IL-2

## Preparation

Produced in rabbits immunized with purified, recombinant Canine IL-2 (rh IL-2; Q29416; Ala21-Thr155,147Cys/Ser). IL-2 specific IgG was purified by Canine IL-2 affinity chromatography.

## Formulation

0.2  $\mu$ m filtered solution in PBS

## Storage

This antibody can be stored at 2°C-8°C for one month without detectable loss of activity. Antibody products are stable for twelve months from date of receipt when stored at -20°C to -80°C.

Preservative-Free.

Sodium azide is recommended to avoid contamination (final concentration 0.05%-0.1%). It is toxic to cells and should be disposed of properly. Avoid repeated freeze-thaw cycles.

## Clonality

Polyclonal

## Ig Type

Rabbit IgG

## Applications

ELISA, WB

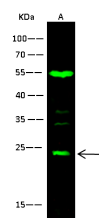
## Dilutions

WB: 5-10  $\mu$ g/ml

ELISA:0.1-0.2  $\mu$ g/mL

This antibody can be used at 0.1-0.2  $\mu$ g/mL with the appropriate secondary reagents to detect Canine IL-2. The detection limit for Canine IL-2 is 0.00975 ng/well.

## Validations



Lanes	
Items	A
Sample (whole cell lysate)	Hu-T78
Sample Volume ( $\mu$ g/lane)	30
Gel	13% SDS-PAGE reducing gel
Recommended Concentration	5-10 $\mu$ g/ml
Secondary Antibody	Dylight 800-labeled Antibody To Rabbit IgG (H+L), at 1:5000 dilution.

IL-2 Antibody, Rabbit PAb, Antigen Affinity Purified, Western blot