

RRP36 antibody



Catalog Number: 114928

Product name

RRP36 antibody

Immunogen

[Human C6orf153 Recombinant protein \(His tag\)](#)

Specificity

Human; other species not tested.

Antibody description

RRP36 Rabbit Polyclonal antibody. Positive WB detected in MCF-7 cells, HEK-293 cells. Observed molecular weight by Western-blot: 30-40 kDa

Preparation

This antibody was obtained by immunization of RRP36 recombinant protein (Accession Number: NM_033112). Purification method: Antigen affinity purified.

Formulation

PBS with 0.1% sodium azide and 50% glycerol pH 7.3.

Storage

Store at -20°C. DO NOT ALIQUOT

Clonality

Polyclonal

Ig Type

Rabbit IgG

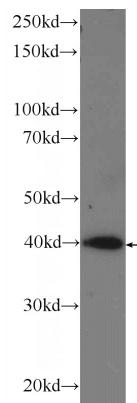
Applications

ELISA, WB

Dilutions

Recommended Dilution:
WB: 1:200-1:2000

Validations



MCF-7 cells were subjected to SDS PAGE followed by western blot with Catalog No:114928(C6orf153 Antibody) at dilution of 1:600