

KCNE1 antibody



Catalog Number: 111928

Product name

KCNE1 antibody

Specificity

Human, Mouse, Rat; other species not tested.

Antibody description

KCNE1 Rabbit Polyclonal antibody. Positive WB detected in mouse heart tissue, mouse testis tissue. Positive IF detected in mouse heart tissue. Observed molecular weight by Western-blot: 18-25kd, 28-35kd

Preparation

This antibody was obtained by immunization of KCNE1 recombinant protein (Accession Number: BC036452). Purification method: Antigen affinity purified.

Formulation

PBS with 0.02% sodium azide and 50% glycerol pH 7.3.

Storage

Store at -20°C. DO NOT ALIQUOT

Clonality

Polyclonal

Ig Type

Rabbit IgG

Applications

ELISA, WB, IF

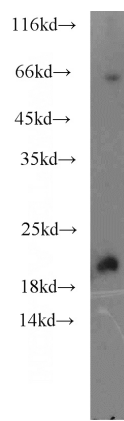
Dilutions

Recommended Dilution:

WB: 1:500-1:5000

IF: 1:20-1:200

Validations

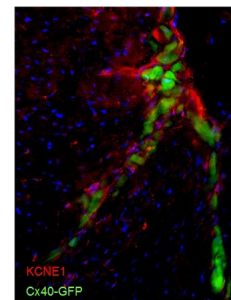


mouse heart tissue were subjected to SDS PAGE followed by western blot with Catalog No:111928(KCNE1 antibody) at dilution of 1:3000

KCNE1 Polyclonal Antibody

Immunofluorescence of frozen mouse Heart section. 1:200 dilution overnight at 4°C in Block. Secondary antibody: Alexa 594 Goat anti-rabbit.

KCNE1 is localised to conduction system (Cx40-GFP), although expression appears to be in cells surrounding conduction myocytes (not the cardiomyocytes, as expected).



IF result of anti-KCNE1(Catalog No:111928) in frozen mouse heart section by Dr Nicola Smart.