

# Anti-TRAF2 antibody



Catalog Number: 141928

## Product name

Anti-TRAF2 antibody

## Specificity

Human TRAF2

## Antibody description

Rabbit Polyclonal to Human TRAF2

## Preparation

Produced in rabbits immunized with a synthetic peptide corresponding to the C-terminus of the Human TRAF2, and purified by antigen affinity chromatography.

## Formulation

0.2 µm filtered solution in PBS

## Storage

This antibody can be stored at 2°C-8°C for one month without detectable loss of activity. Antibody products are stable for twelve months from date of receipt when stored at -20°C to -80°C.

Preservative-Free.

Sodium azide is recommended to avoid contamination (final concentration 0.05%-0.1%). It is toxic to cells and should be disposed of

properly. Avoid repeated freeze-thaw cycles.

## Clonality

Polyclonal

## Ig Type

Rabbit IgG

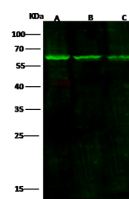
## Applications

WB

## Dilutions

WB: 5-10 µg/ml

## Validations



Lanes	A	B	C
Items			
Sample (whole cell lysate)	Hela	Raji	293T
Sample Volume (µg/lane)	30	30	30
Gel	13% SDS-PAGE reducing gel		
Recommended Concentration	5-10 µg/ml		
Secondary Antibody	Dylight 800 labeled Antibody to Rabbit IgG (H+L), at 1:5000 dilution.		
Developed using Odyssey imaging system.			
Explanation	Predicted band size : 55 kDa Observed band size : 62 kDa		

TRAF2 Antibody, Rabbit PAb, Antigen Affinity Purified, Western blot