

# GDI2 antibody

Catalog Number: 110928

## Product name

GDI2 antibody

## Specificity

human; other species not tested.

## Antibody description

GDI2 Rabbit Polyclonal antibody. Positive WB detected in HepG2 cells. Positive IHC detected in human skin. Observed molecular weight by Western-blot: 46-50kd

## Preparation

This antibody was obtained by immunization of Peptide (Accession Number: NM\_001494). Purification method: Antigen affinity purified.

## Formulation

0.1M NaHCO<sub>3</sub>, 0.1M glycine, 0.02% sodium azide and 50% glycerol pH 7.3.

## Storage

Store at -20°C. DO NOT ALIQUOT

## Clonality

Polyclonal

## Ig Type

Rabbit IgG

## Applications

ELISA, WB, IHC

## Dilutions

Recommended Dilution:

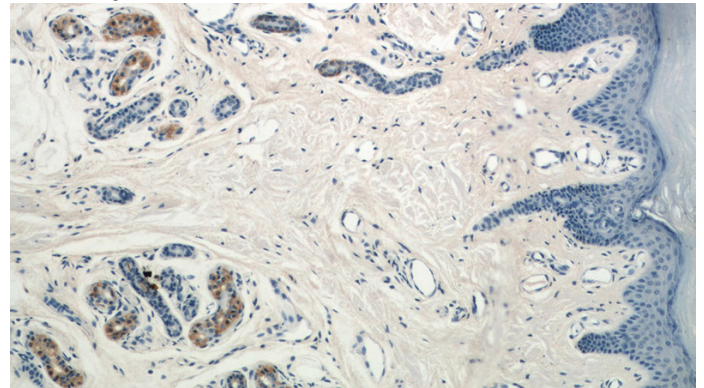
WB: 1:200-1:1000

IHC: 1:20-1:200

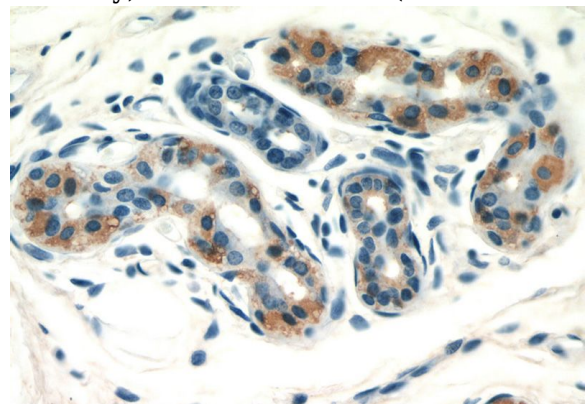
## Validations



HepG2 cells were subjected to SDS PAGE followed by western blot with Catalog No:110928(GDI2 antibody) at dilution of 1:300



Immunohistochemical of paraffin-embedded human skin using Catalog No:110928(GDI2 antibody) at dilution of 1:50 (under 10x lens)



Immunohistochemical of paraffin-embedded human skin using Catalog No:110928(GDI2 antibody) at dilution of 1:50 (under 40x lens)