

Human CLIC1/G6/NCC27 (His tag) recombinant protein



Catalog Number: 519128

General Information

Gene Name Synonym

Chloride Intracellular Channel Protein 1, Chloride Channel ABP, Nuclear Chloride Ion Channel 27, NCC27, Regulatory Nuclear Chloride Ion Channel Protein, hRNCC, CLIC1, G6, NCC27

Protein Construction

A DNA sequence encoding the Human CLIC1/G6/NCC27 Met1-Lys241 is expressed with a 6His tag at the N-terminus.

Organism

Human

Expression Host

E. coli

QC Testing

Purity

>95% as determined by SDS-PAGE.

Endotoxin

<1.0 EU per μg protein as determined by the LAL method.

Stability

Store for up to 12 months at -20°C to -80°C as lyophilized powder. Aliquots of reconstituted samples are stable at $< -20^{\circ}\text{C}$ for 3 months.

Formulation

Lyophilized from a $0.2\ \mu\text{m}$ filtered solution of 20mM Tris, 150mM NaCl, pH 8.0.

Usage Guide

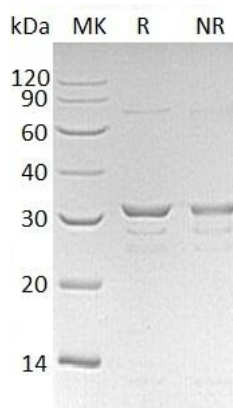
Storage

Lyophilized protein should be stored at $<-20^{\circ}\text{C}$, though stable at room temperature for 3 weeks. Reconstituted protein solution can be stored at $4-7^{\circ}\text{C}$ for 2-7 days.

Reconstitution

Always centrifuge tubes before opening. Do not mix by vortex or pipetting. It is not recommended to reconstitute to a concentration less than $100\ \mu\text{g}/\text{ml}$. Dissolve the lyophilized protein in ddH₂O. Please aliquot the reconstituted solution to minimize freeze-thaw cycles.

SDS-PAGE



Human CLIC1/G6/NCC27 (His tag) recombinant protein