

# Anti-Rel B Mouse antibody

Catalog Number: 169128

## Product name

Anti-Rel B Mouse antibody

## Specificity

Human

## Antibody description

Rel B Mouse monoclonal antibody

## Preparation

Antigen: Purified recombinant fragment of human RELB (AA: 273-443) expressed in E. Coli.

## Formulation

Purified antibody in PBS with 0.05% sodium azide.

## Storage

Store at 4°C short term. Store at -20°C long term. Avoid freeze / thaw cycle.

## Clonality

Monoclonal

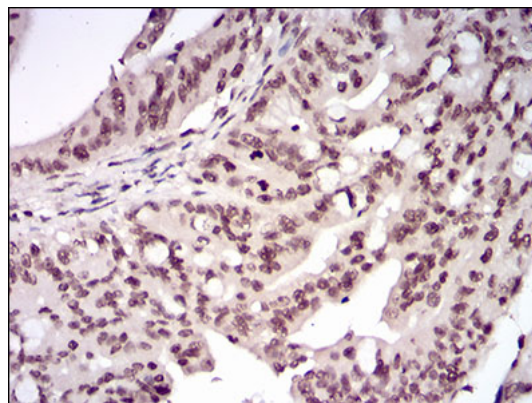
## Ig Type

Mouse IgG2a

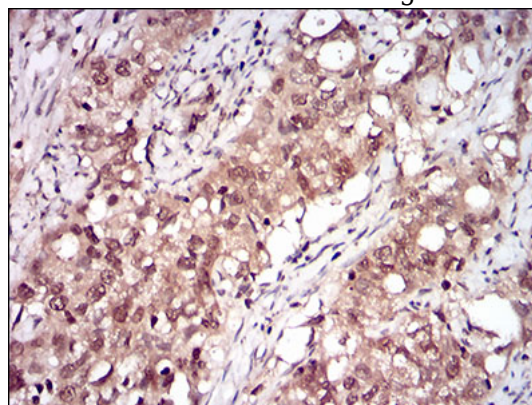
## Applications

IHC-P, ICC/IF, FC

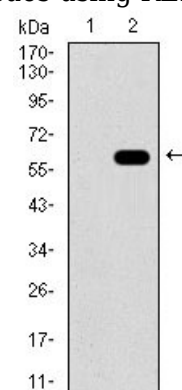
## Validations



Immunohistochemical analysis of paraffin-embedded rectum cancer tissues using RELB mouse mAb with DAB staining.



Immunohistochemical analysis of paraffin-embedded cervical cancer tissues using RELB mouse mAb with DAB staining.

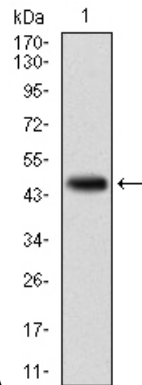


Western blot analysis using RELB mAb against

Western blot analysis using RELB mAb against

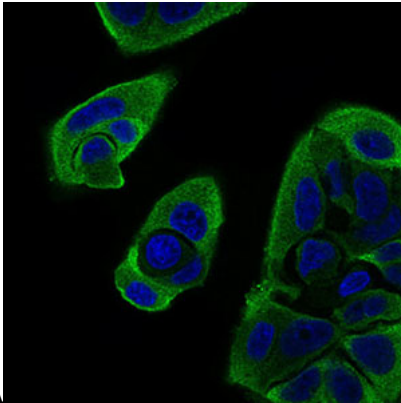
# Anti-Rel B Mouse antibody

Catalog Number: 169128



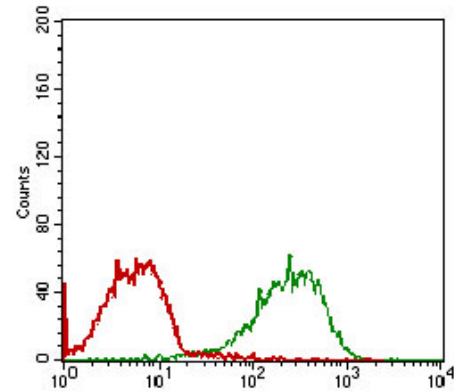
HEK293 (1) and RELB (AA

Western blot analysis using RELB mAb against



human RELB (AA

Immunofluorescence analysis of MCF-7 cells using RELB mouse mAb (green). Blue



Flow cytometric analysis of MCF-7 cells using RELB mouse mAb (green) and negative control (red).