

# APAF1 antibody

Catalog Number: 108128

## Product name

APAF1 antibody

WB: 1:500-1:5000

IP: 1:200-1:2000

## Specificity

Human, Rat; other species not tested.

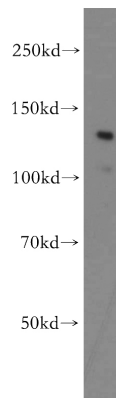
IHC: 1:20-1:200

IF: 1:20-1:200

## Antibody description

APAF1 Rabbit Polyclonal antibody. Positive IHC detected in human heart tissue, human spleen tissue. Positive IF detected in A549 cells. Positive WB detected in HEK-293 cells, A549 cells, COLO 320 cells. Positive IP detected in HEK-293 cells. Observed molecular weight by Western-blot: 130-142kd

## Validations



## Preparation

This antibody was obtained by immunization of APAF1 recombinant protein (Accession Number: NM\_181861). Purification method: Antigen affinity purified.

HEK-293 cells were subjected to SDS PAGE followed by western blot with Catalog No:108128(APAF1 antibody) at dilution of 1:500

## Formulation

PBS with 0.1% sodium azide and 50% glycerol pH 7.3.

## Storage

Store at -20°C. DO NOT ALIQUOT

## Clonality

Polyclonal

## Ig Type

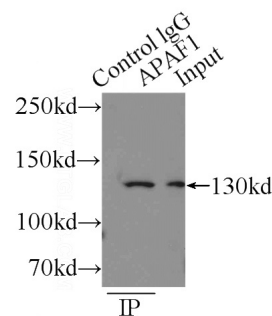
Rabbit IgG

## Applications

ELISA, WB, IHC, IP, IF

## Dilutions

Recommended Dilution:

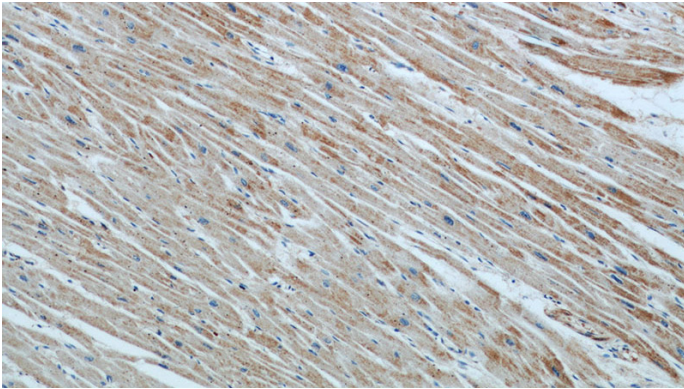


IP Result of anti-APAF1 (IP:Catalog No:108128, 4ug; Detection:Catalog No:108128 1:500) with HEK-293 cells lysate 2000ug.

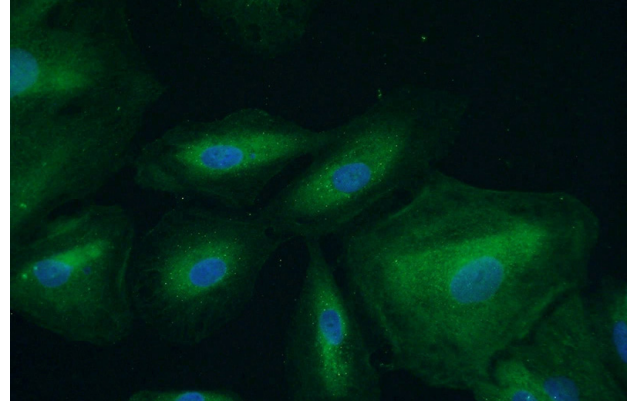
# APAF1 antibody

Catalog Number: 108128

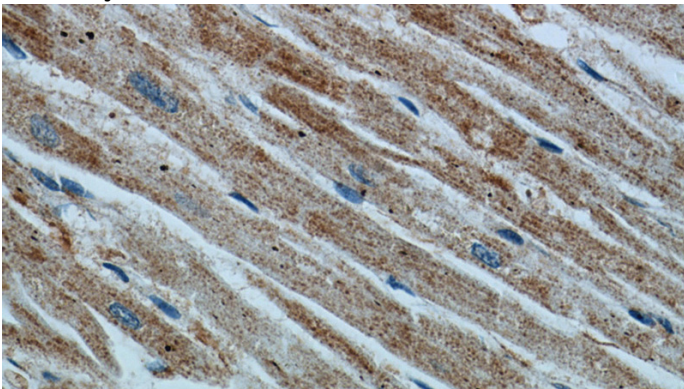
---



Immunohistochemical of paraffin-embedded human heart using Catalog No:108128(APAF1 antibody) at dilution of 1:50 (under 40x lens)



Immunofluorescent analysis of A549 cells using Catalog No:108128(APAF1 Antibody) at dilution of 1:50 and Alexa Fluor 488-conjugated AffiniPure Goat Anti-Rabbit IgG(H+L)



Immunohistochemical of paraffin-embedded human heart using Catalog No:108128(APAF1 antibody) at dilution of 1:50 (under 10x lens)