

Product name

TIMELESS antibody

WB: 1:500-1:5000

IP: 1:500-1:5000

Specificity

Human, Mouse; other species not tested.

IHC: 1:20-1:200

Antibody description

TIMELESS Rabbit Polyclonal antibody. Positive IHC detected in human spleen, human brain, human heart, human kidney, human ovary, human placenta, human testis. Positive WB detected in HeLa cells, A549 cells, NIH/3T3 cells. Positive IP detected in mouse testis tissue. Observed molecular weight by Western-blot: 140-150 kDa

Preparation

This antibody was obtained by immunization of TIMELESS recombinant protein (Accession Number: NM_003920). Purification method: Antigen affinity purified.

Formulation

PBS with 0.02% sodium azide and 50% glycerol pH 7.3.

Storage

Store at -20°C. DO NOT ALIQUOT

Clonality

Polyclonal

Ig Type

Rabbit IgG

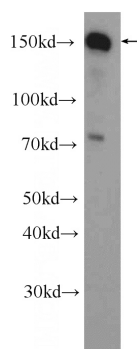
Applications

ELISA, WB, IHC, IP

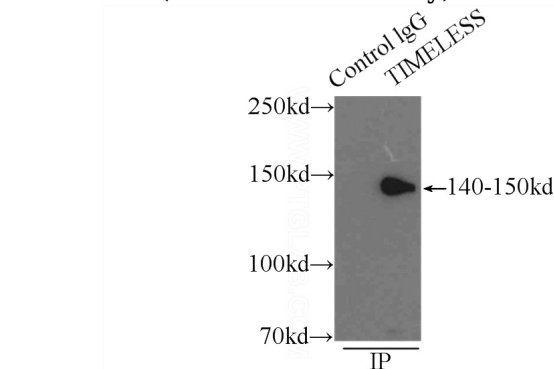
Dilutions

Recommended Dilution:

Validations

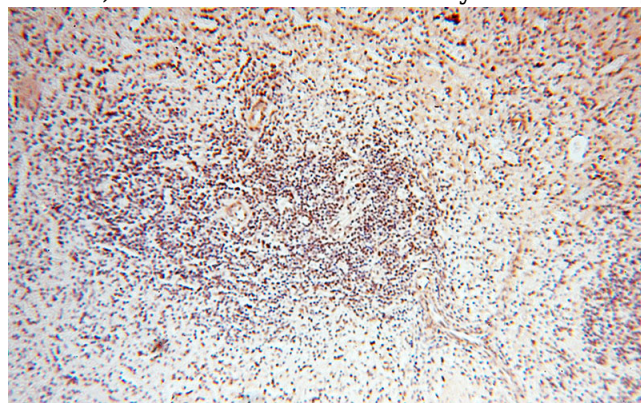


HeLa cells were subjected to SDS PAGE followed by western blot with Catalog No:116128(TIMELESS antibody) at dilution of



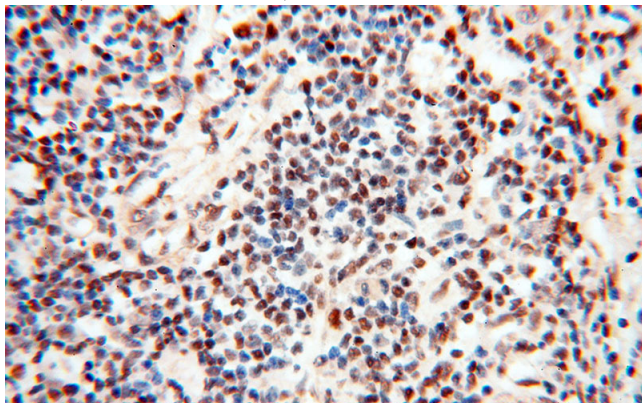
1:1000

IP Result of anti-TIMELESS (IP:Catalog No:116128, 3ug; Detection:Catalog No:116128 1:1000) with mouse testis tissue lysate 10000ug.



Catalog Number: 116128

Immunohistochemical of paraffin-embedded human spleen using Catalog No:116128(TIMELESS antibody) at dilution of 1:50 (under 10x lens)



Immunohistochemical of paraffin-embedded human spleen using Catalog No:116128(TIMELESS antibody) at dilution of 1:50 (under 40x lens)