

Anti-CDC123 Rabbit antibody



Catalog Number: 167828

Product name

Anti-CDC123 Rabbit antibody

Specificity

Human, Mouse, Rat

Antibody description

CDC123 Rabbit monoclonal antibody

Preparation

Antigen: A synthetic peptide of human CDC123

Formulation

50nM Tris-Glycine(pH 7.4), 0.15M NaCl,
40%Glycerol, 0.01% sodium azide and 0.05% BSA

Storage

Store at 4°C short term. Store at -20°C long term.
Avoid freeze / thaw cycle.

Clonality

Monoclonal

Ig Type

Rabbit IgG

Applications

WB, FC, IP

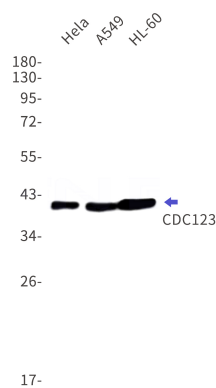
Dilutions

WB: 1/1000

FC: 1/20

IP: 1/20

Validations



Western blot detection of CDC123 in HeLa,A549,HL-60 cell lysates using CDC123 Rabbit mAb(1:1000 diluted).Predicted band size:39kDa.Observed band size:39kDa.