

# WIPF2 antibody



Catalog Number: 116828

## Product name

WIPF2 antibody

## Specificity

Human, Mouse, Rat; other species not tested.

## Antibody description

WIPF2 Rabbit Polyclonal antibody. Positive WB detected in mouse brain tissue, K-562 cells, mouse colon tissue, SH-SY5Y cells. Observed molecular weight by Western-blot: 46-50 kDa

## Preparation

This antibody was obtained by immunization of WIPF2 recombinant protein (Accession Number: XM\_047435497). Purification method: Antigen affinity purified.

## Formulation

PBS with 0.02% sodium azide and 50% glycerol pH 7.3.

## Storage

Store at -20°C. DO NOT ALIQUOT

## Clonality

Polyclonal

## Ig Type

Rabbit IgG

## Applications

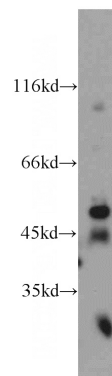
ELISA, WB

## Dilutions

Recommended Dilution:

WB: 1:500-1:5000

## Validations



mouse brain tissue were subjected to SDS PAGE followed by western blot with Catalog No:116828(WIPF2 antibody) at dilution of 1:500