

Anti-Tau Rabbit antibody



Catalog Number: 166828

Product name

Anti-Tau Rabbit antibody

Specificity

Human, Mouse, Rat

Antibody description

Tau Rabbit polyclonal antibody

Preparation

Antigen: A synthetic peptide of human Tau

Formulation

Supplied in 50nM Tris-Glycine(pH 7.4), 0.15M NaCl, 40%Glycerol, 0.01% sodium azide and 0.05% BSA.

Storage

Store at -20°C. Stable for 12 months from date of receipt.

Clonality

Polyclonal

Ig Type

Rabbit IgG

Applications

WB, ICC/IF, FC

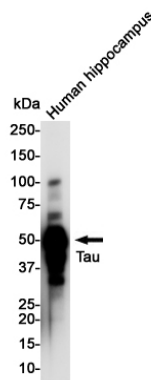
Dilutions

WB: 1/2000

ICC/IF: 1/20-1/100

FC: 1/20

Validations



Western blot detection of Tau in Human Hippocampus lysates using Tau Rabbit pAb(1:1000 diluted).Predicted band size:79KDa.Observed band size:50-80KDa.