

# Human PRL recombinant protein (C-His)



Catalog Number: 514828

## General Information

### Protein Construction

A DNA sequence encoding the human PRL (CAA25214.1) (Met1-Cys227) was expressed with a polyhistidine tag at the C-terminus.

### Organism

Human

### Expression Host

Baculovirus-Insect Cells

## QC Testing

### Purity

> 95 % as determined by SDS-PAGE.

### Endotoxin

<1.0 EU per µg protein as determined by the LAL method.

### Stability

Samples are stable for up to twelve months from date of receipt at -70°C

### Predicted N terminal

Leu 29

### Molecular Mass

The recombinant human PRL consists of 210 amino acids and predicts a molecular mass of 24.3 kDa.

## Formulation

Lyophilized from sterile 20 mM Tris, 500 mM NaCl, 10 %gly, pH 8.0.

1. Normally 5 % - 8 % trehalose, mannitol and 0.01% Tween80 are added as protectants before lyophilization. Specific concentrations are included in the hardcopy of COA.
2. Please contact us for any concerns or special requirements.

## Usage Guide

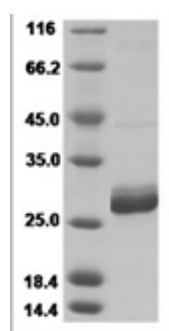
### Storage

Store it under sterile conditions at -20°C to -80°C. It is recommended that the protein be aliquoted for optimal storage. Avoid repeated freeze-thaw cycles.

### Reconstitution

A hardcopy of COA with reconstitution instruction is sent along with the products. Please refer to it for detailed information.

## SDS-PAGE



Human Prolactin / PRL Protein (His Tag)