

BCL3 antibody

Catalog Number: 108428

Product name

BCL3 antibody

IP: 1:200-1:2000

IHC: 1:20-1:200

Specificity

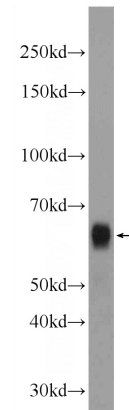
Human; other species not tested.

IF: 1:20-1:200

Antibody description

BCL3 Rabbit Polyclonal antibody. Positive IP detected in HEK-293 cells. Positive WB detected in HEK-293 cells, A549 cells. Positive IHC detected in human lymphoma tissue. Positive IF detected in HepG2 cells. Observed molecular weight by Western-blot: 48-60 kDa

Validations



Preparation

This antibody was obtained by immunization of BCL3 recombinant protein (Accession Number: BC064993). Purification method: Antigen Affinity purified.

HEK-293 cells were subjected to SDS PAGE followed by western blot with Catalog No:117101(BCL3 Antibody) at dilution of 1:600

Formulation

PBS with 0.02% sodium azide and 50% glycerol pH 7.3.

Storage

Store at -20°C. DO NOT ALIQUOT

Clonality

Polyclonal

Ig Type

Rabbit IgG

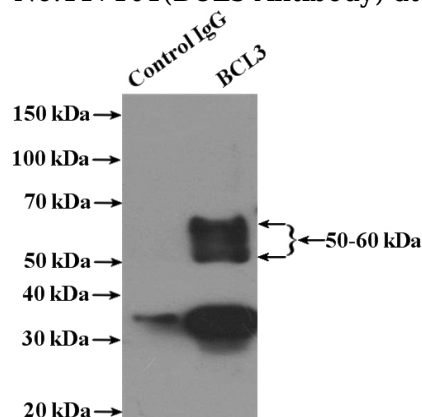
Applications

ELISA, WB, IHC, IF, IP

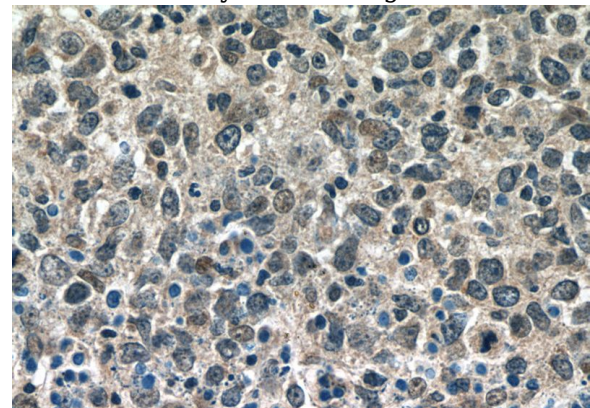
Dilutions

Recommended Dilution:

WB: 1:200-1:2000



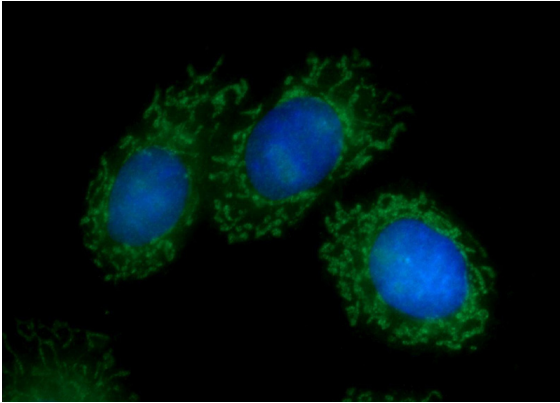
IP Result of anti-BCL3 (IP:Catalog No:117101, 4ug; Detection:Catalog No:117101 1:600) with HEK-293 cells lysate 3000ug.



BCL3 antibody

Catalog Number: 108428

Immunohistochemistry of paraffin-embedded human lymphoma tissue slide using Catalog No:117101(BCL3 Antibody) at dilution of 1:50 (under 40x lens)



Immunofluorescent analysis of HepG2 cells using Catalog No:117101(BCL3 Antibody) at dilution of 1:50 and Alexa Fluor 488-conjugated AffiniPure Goat Anti-Rabbit IgG(H+L)