

# TSG101 antibody

Catalog Number: 116428

## Product name

TSG101 antibody

WB: 1:200-1:2000

IP: 1:200-1:2000

## Specificity

Human, Mouse, Rat; other species not tested.

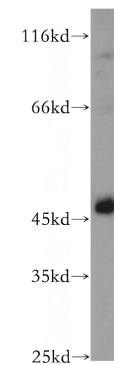
IHC: 1:20-1:200

IF: 1:10-1:100

## Antibody description

TSG101 Rabbit Polyclonal antibody. Positive WB detected in HeLa cells, NIH/3T3 cells. Positive IP detected in HeLa cells. Positive IF detected in HeLa cells. Positive IHC detected in human heart tissue. Positive FC detected in HeLa cells. Observed molecular weight by Western-blot: 46 kDa

## Validations



## Preparation

This antibody was obtained by immunization of TSG101 recombinant protein (Accession Number: NM\_006292). Purification method: Antigen affinity purified.

HeLa cells were subjected to SDS PAGE followed by western blot with Catalog No:116428(TSG101 antibody) at dilution of 1:500

## Formulation

PBS with 0.02% sodium azide and 50% glycerol pH 7.3.

## Storage

Store at -20°C. DO NOT ALIQUOT

## Clonality

Polyclonal

## Ig Type

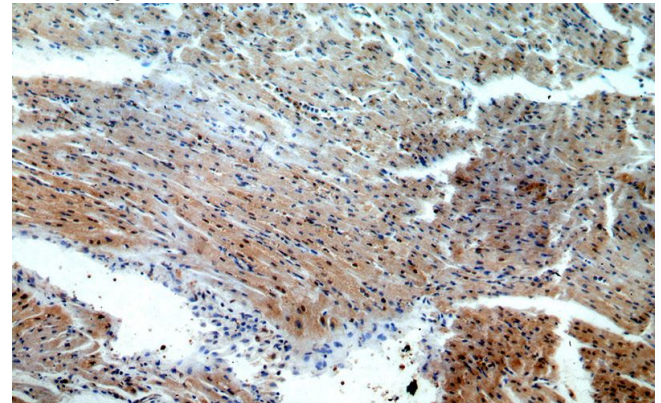
Rabbit IgG

## Applications

ELISA, WB, IHC, IF, IP, FC

## Dilutions

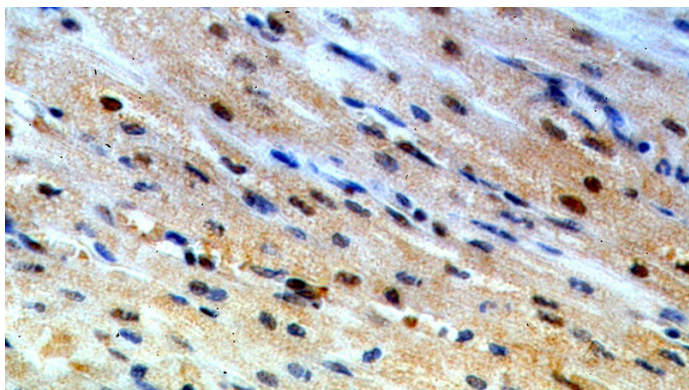
Recommended Dilution:



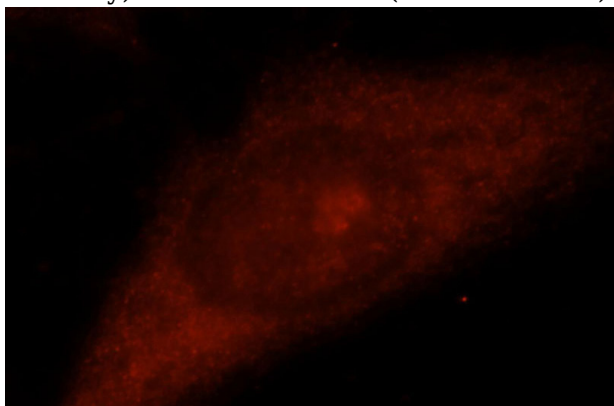
Immunohistochemical of paraffin-embedded human heart using Catalog No:116428(TSG101 antibody) at dilution of 1:50 (under 10x lens)

# TSG101 antibody

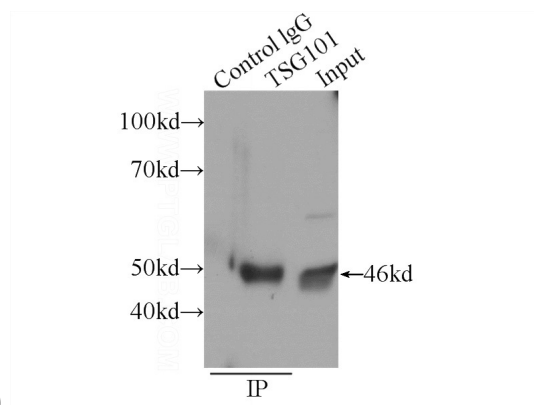
Catalog Number: 116428



Immunohistochemical of paraffin-embedded human heart using Catalog No:116428(TSG101 antibody) at dilution of 1:50 (under 40x lens)

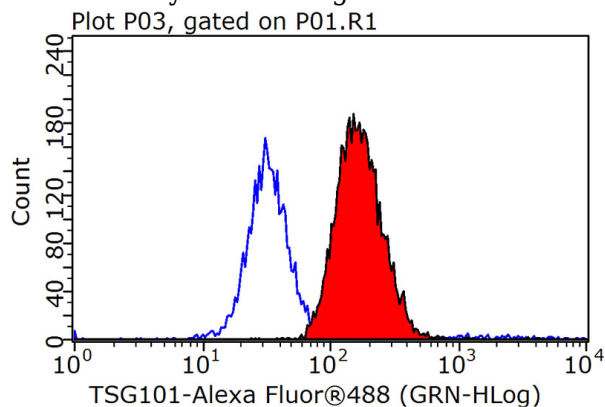


Immunofluorescent analysis of HeLa cells, using TSG101 antibody Catalog No:116428 at 1:25 dilution and Rhodamine-labeled goat anti-rabbit



IgG (red).

IP Result of anti-TSG101 (IP:Catalog No:116428, 3ug; Detection:Catalog No:116428 1:500) with HeLa cells lysate 1320ug.



1X10<sup>6</sup> HeLa cells were stained with 0.2ug TSG101 antibody (Catalog No:116428, red) and control antibody (blue). Fixed with 90% MeOH blocked with 3% BSA (30 min). Alexa Fluor 488-conjugated AffiniPure Goat Anti-Rabbit IgG(H+L) with dilution 1:1000.