

Anti-MAP4K1 antibody



Catalog Number: 176028

Product name

Anti-MAP4K1 antibody

Specificity

Human, Mouse

Antibody description

Rabbit polyclonal antibody to MAP4K1

Preparation

This antigen of this antibody was the antiserum was produced against synthesized peptide derived from human mekkk 1. aa range:371-420

Formulation

Liquid, Liquid in PBS containing 50% glycerol, 0.5% BSA and 0.02% sodium azide.

Storage

Store at +4°C after thawing. Aliquot store at -20°C or -80°C. Avoid repeated freeze / thaw cycles.

Clonality

Polyclonal

Ig Type

Rabbit IgG

Applications

WB, IHC-P

Dilutions

WB: 1:500-1:2000

Validations

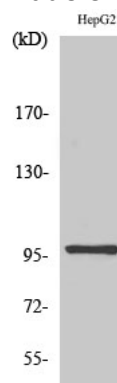


Fig1.; Western Blot analysis of various cells using HPK1 Polyclonal Antibody diluted at 1: 1000