

NOTCH3 Polyclonal Antibody



Catalog Number: 164028

Product name

NOTCH3 Polyclonal Antibody

Specificity

Human, Mouse

Antibody description

Polyclonal antibody to NOTCH3

Preparation

Antigen: A synthetic peptide of human NOTCH3

Formulation

PBS with 0.02% sodium azide, 50% glycerol, pH7.3.

Storage

Store at -20°C. Avoid freeze / thaw cycles.

Clonality

Polyclonal

Ig Type

Rabbit IgG

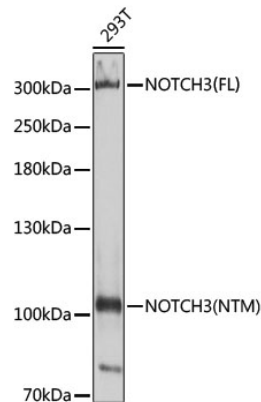
Applications

WB, IF

Dilutions

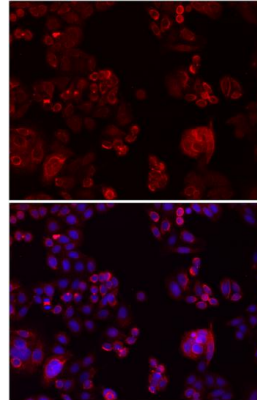
WB 1:200 - 1:1000
IF 1:20 - 1:200

Validations



Western blot - NOTCH3 Polyclonal Antibody

Western blot analysis of extracts of 293T cells, using NOTCH3 antibody at 1:400 dilution. Secondary antibody: HRP Goat Anti-Rabbit IgG (H+L) at 1:10000 dilution. Lysates/proteins: 25ug per lane. Blocking buffer: 3% nonfat dry milk in TBST. Detection: ECL Enhanced Kit. Exposure time: 90s.



Immunofluorescence - NOTCH3 Polyclonal Antibody

Immunofluorescence analysis of SW480 cells showing nuclear and cytoplasmic localization with NOTCH3 antibody 1:200 (top, red)..