

CTBS antibody



Catalog Number: 109718

Product name

CTBS antibody

Recommended Dilution:

WB: 1:200-1:1000

Specificity

Human, Mouse, Rat; other species not tested.

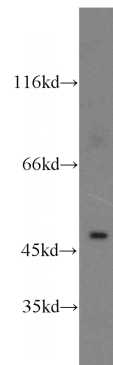
IHC: 1:20-1:200

IF: 1:10-1:100

Antibody description

CTBS Rabbit Polyclonal antibody. Positive WB detected in MCF7 cells, HeLa cells, HepG2 cells, mouse colon tissue, SMMC-7721 cells. Positive IF detected in HepG2 cells. Positive IHC detected in human prostate cancer tissue, human kidney tissue, human liver cancer tissue, human liver tissue. Observed molecular weight by Western-blot: 44-50kd

Validations



Preparation

This antibody was obtained by immunization of CTBS recombinant protein (Accession Number: BC024007). Purification method: Antigen affinity purified.

MCF7 cells were subjected to SDS PAGE followed by western blot with Catalog No:109718(CTBS antibody) at dilution of 1:400

Formulation

PBS with 0.02% sodium azide and 50% glycerol pH 7.3.

Storage

Store at -20°C. DO NOT ALIQUOT

Clonality

Polyclonal

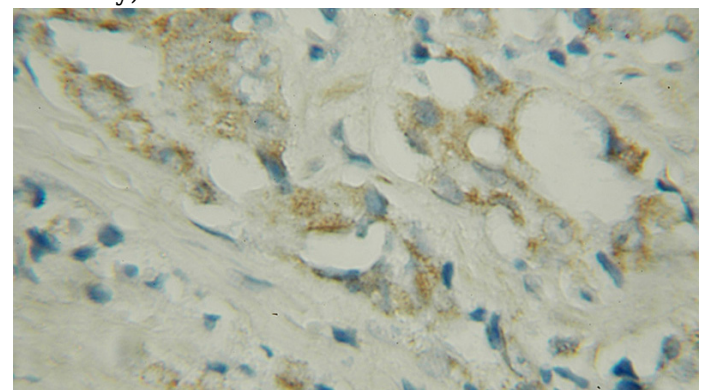
Ig Type

Rabbit IgG

Applications

ELISA, WB, IHC, IF

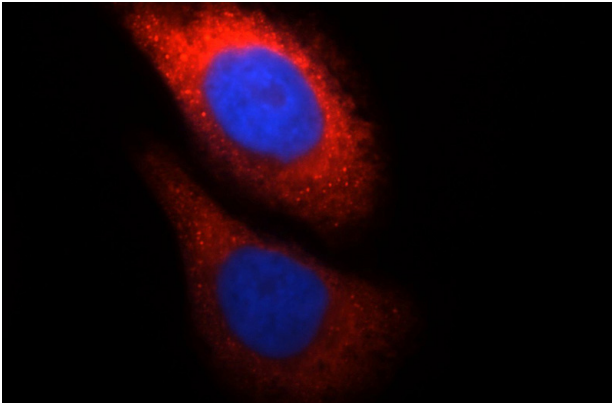
Dilutions



Immunohistochemical of paraffin-embedded human prostate cancer using Catalog No:109718(CTBS antibody) at dilution of 1:50 (under 40x lens)

CTBS antibody

Catalog Number: 109718



Immunofluorescent analysis of HepG2 cells, using CTBS antibody Catalog No:109718 at 1:25 dilution and Rhodamine-labeled goat anti-rabbit IgG (red). Blue pseudocolor = DAPI (fluorescent DNA dye).