

Anti-FOXF2 antibody



Catalog Number: 176718

Product name

Anti-FOXF2 antibody

Specificity

Human, Mouse

Antibody description

Mouse monoclonal antibody to FOXF2

Preparation

This antigen of this antibody was recombinant foxf2 of human origin.

Formulation

Liquid, 1*TBS (pH7.4), 1%BSA, 40%Glycerol.
Preservative: 0.05% Sodium Azide.

Storage

Store at +4°C

Clonality

Monoclonal

Ig Type

Mouse IgG1

Applications

WB, IP, IF

Dilutions

WB: 1:100-1:1,000

IP: 1-2 µg per 100-500 µg of total protein(1 ml of cell lysate) IF 1:50-500

Validations

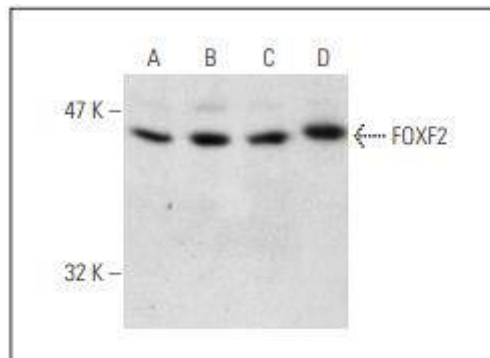


Fig1: Western blot analysis of FOXF2 expression in HepG2 (A), HeLa (B), A549 (C) and THP-1 (D) nuclear extracts.

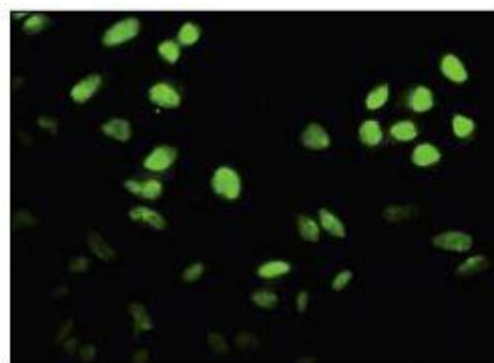


Fig2: Immunofluorescence staining of paraformaldehyde-fixed HeLa cells showing nuclear localization.