

Anti-Integrin beta 1 Rabbit antibody



Catalog Number: 166718

Product name

Anti-Integrin beta 1 Rabbit antibody

Specificity

Human, Mouse, Rat

Antibody description

Integrin beta 1 Rabbit polyclonal antibody

Preparation

Antigen: Peptide sequence around aa.790~794 (V-V-N-P-K) derived from Human Integrin β 1 (CD29).

Formulation

Supplied at 1.0mg/mL in phosphate buffered saline (without Mg²⁺ and Ca²⁺), pH 7.4, 150mM NaCl, 0.02% sodium azide and 50% glycerol.

Storage

Store at 4°C short term. Store at -20°C long term. Avoid freeze / thaw cycle.

Clonality

Polyclonal

Ig Type

Rabbit IgG

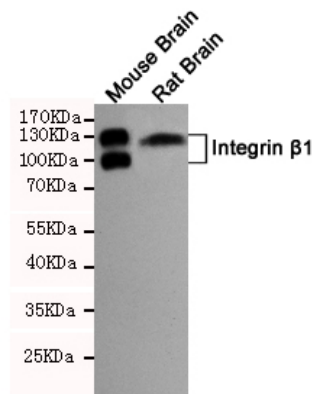
Applications

WB

Dilutions

WB:1/1000

Validations



Western blot analysis of extract from Mouse brain tissue and Rat brain tissue cells using Integrin u03b21 (CD29) rabbit pAb (dilution 1:1000). Predicted band size: 115/135kDa. Observed band size: 115/135kDa.