

# PPP2R2A Polyclonal Antibody



Catalog Number: 163718

## Product name

PPP2R2A Polyclonal Antibody

## Specificity

Human, Mouse, Rat

## Antibody description

Polyclonal antibody to PPP2R2A

## Preparation

Antigen: Recombinant fusion protein containing a sequence corresponding to amino acids 1-447 of human PPP2R2A (NP\_002708.1).

## Formulation

PBS with 0.02% sodium azide, 50% glycerol, pH7.3.

## Storage

Store at -20°C. Avoid freeze / thaw cycles.

## Clonality

Polyclonal

## Ig Type

Rabbit IgG

## Applications

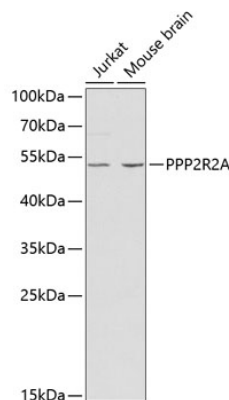
WB, IHC

## Dilutions

WB 1:500 - 1:2000

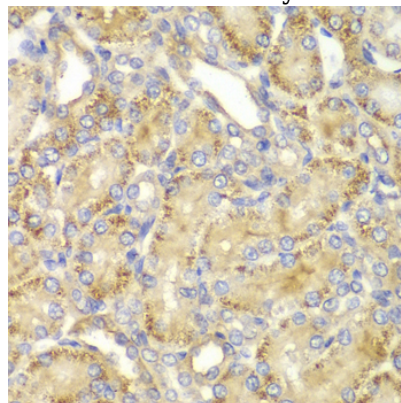
IHC 1:50 - 1:200

## Validations



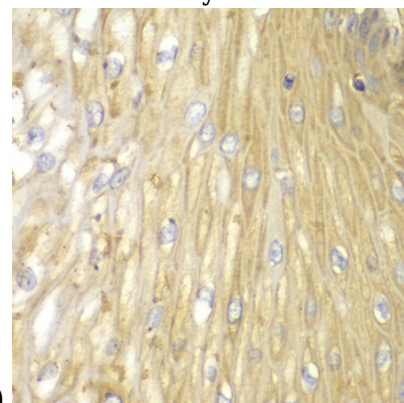
## Western blot - PPP2R2A Polyclonal Antibody

Western blot analysis of extracts of various cell lines, using PPP2R2A antibody at 1:1000 dilution. Secondary antibody: HRP Goat Anti-Rabbit IgG (H+L) at 1:10000 dilution. Lysates/proteins: 25ug per lane. Blocking buffer: 3% nonfat dry milk in TBST.



## Immunohistochemistry - PPP2R2A Polyclonal Antibody

Immunohistochemistry of paraffin-embedded rat kidney using PPP2R2A antibody at dilution of



1:100 (40x lens).

# PPP2R2A Polyclonal Antibody

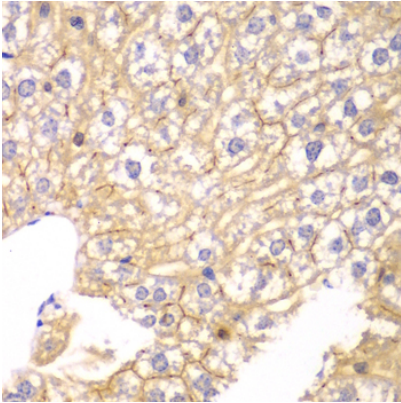


Catalog Number: 163718

---

## Immunohistochemistry - PPP2R2A Polyclonal Antibody

Immunohistochemistry of paraffin-embedded human esophagus using PPP2R2A antibody at dilution of 1:100 (40x lens).



## Immunohistochemistry - PPP2R2A Polyclonal Antibody

Immunohistochemistry of paraffin-embedded mouse liver using PPP2R2A antibody at dilution of 1:100 (40x lens).