

Human PPT1 / Palmitoyl-protein thioesterase 1 (Fc Tag)



Catalog Number: 503318

General Information

Gene Name Synonym

Palmitoyl-protein hydrolase 1

Protein Construction

A DNA sequence encoding the human PPT1 (P50897-1)(Met1-Gly306) was expressed with the Fc region of human IgG1 at the C-terminus.

Organism

Human

Expression Host

Human Cells

QC Testing

Purity

> 85 % as determined by SDS-PAGE

Endotoxin

< 1.0 EU per µg of the protein as determined by the LAL method

Stability

Samples are stable for up to twelve months from date of receipt at -70°C

Predicted N terminal

Asp 28

Molecular Mass

The recombinant human PPT1/Fc comprises 520

amino acids and has a predicted molecular mass of 58.3 kDa. The apparent molecular mass of the protein is approximately 58-67 kDa in SDS-PAGE under reducing conditions.

Formulation

Lyophilized from sterile PBS, pH 7.4.

1. 5 % trehalose and mannitol are added as protectants before lyophilization.

2. Please contact us for any concerns or special requirements.

Usage Guide

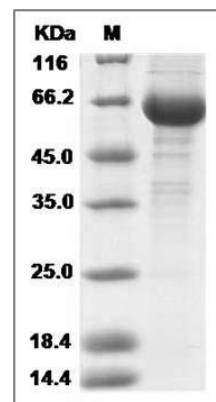
Storage

Store it under sterile conditions at -20°C to -80°C. It is recommended that the protein be aliquoted for optimal storage. Avoid repeated freeze-thaw cycles.

Reconstitution

Adding sterile water, prepare a stock solution of 0.25 mg/ml. Concentration is measured by UV-Vis.

SDS-PAGE



Human PPT1 / Palmitoyl-protein thioesterase 1 Protein (Fc Tag) SDS-PAGE