

LRG1 antibody

Catalog Number: 112318

Product name

LRG1 antibody

Specificity

Human, Mouse; other species not tested.

Antibody description

LRG1 Rabbit Polyclonal antibody. Positive IHC detected in human liver tissue, human pancreas cancer tissue. Positive WB detected in HepG2 cells, HEK-293 cells, HL-60 cells, L02 cells. Observed molecular weight by Western-blot: 45 kDa

Preparation

This antibody was obtained by immunization of LRG1 recombinant protein (Accession Number: NM_052972). Purification method: Antigen affinity purified.

Formulation

PBS with 0.02% sodium azide and 50% glycerol pH 7.3.

Storage

Store at -20°C. DO NOT ALIQUOT

Clonality

Polyclonal

Ig Type

Rabbit IgG

Applications

ELISA, WB, IHC

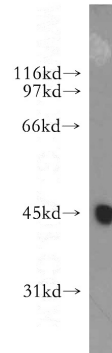
Dilutions

Recommended Dilution:

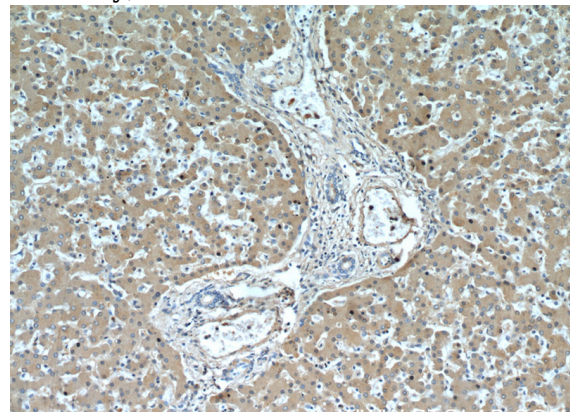
WB: 1:500-1:5000

IHC: 1:20-1:200

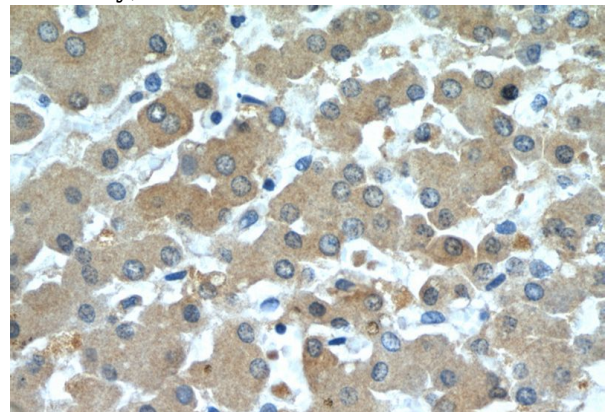
Validations



HepG2 cells were subjected to SDS PAGE followed by western blot with Catalog No:112318(LRG1 antibody) at dilution of 1:400



Immunohistochemistry of paraffin-embedded human liver slide using Catalog No:112318(LRG1 Antibody) at dilution of 1:50



Immunohistochemistry of paraffin-embedded human liver slide using Catalog No:112318(LRG1 Antibody) at dilution of 1:50