

# AASS Polyclonal Antibody



Catalog Number: 161318

## Product name

Rabbit IgG

AASS Polyclonal Antibody

## Applications

## Specificity

WB

Human, Mouse, Rat

## Dilutions

## Antibody description

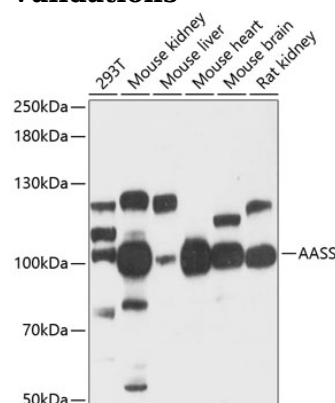
WB 1:500 - 1:2000

Polyclonal antibody to AASS

## Validations

## Preparation

Antigen: Recombinant fusion protein containing a sequence corresponding to amino acids 180-400 of human AASS (NP\_005754.2).



## Formulation

PBS with 0.02% sodium azide, 50% glycerol, pH7.3.

## Western blot - AASS Polyclonal Antibody

## Storage

Store at -20°C. Avoid freeze / thaw cycles.

Western blot analysis of extracts of various cell lines, using AASS antibody at 1:3000 dilution. Secondary antibody: HRP Goat Anti-Rabbit IgG (H+L) at 1:10000 dilution. Lysates/proteins: 25ug per lane. Blocking buffer: 3% nonfat dry milk in TBST. Detection: ECL Basic Kit. Exposure time: 30s.

## Clonality

Polyclonal

## Ig Type