

# CSTF2T antibody

Catalog Number: 109618

## Product name

CSTF2T antibody

## Immunogen

[Human CSTF2T Recombinant protein \(His tag\)](#)

## Specificity

Human, Mouse, Rat; other species not tested.

## Antibody description

CSTF2T Rabbit Polyclonal antibody. Positive WB detected in HeLa cells, human brain tissue, rat brain tissue. Positive IP detected in mouse brain tissue, HeLa cells. Positive IHC detected in human prostate cancer tissue. Positive IF detected in HepG2 cells. Observed molecular weight by Western-blot: 70 kDa

## Preparation

This antibody was obtained by immunization of CSTF2T recombinant protein (Accession Number: NM\_015235). Purification method: Antigen affinity purified.

## Formulation

PBS with 0.02% sodium azide and 50% glycerol pH 7.3.

## Storage

Store at -20°C. DO NOT ALIQUOT

## Clonality

Polyclonal

## Ig Type

Rabbit IgG

## Applications

ELISA, WB, IHC, IF, IP

## Dilutions

Recommended Dilution:

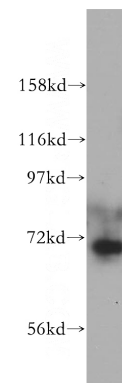
WB: 1:500-1:5000

IP: 1:500-1:5000

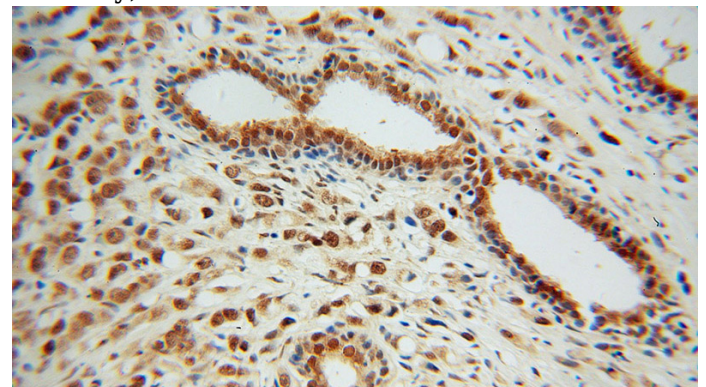
IHC: 1:20-1:200

IF: 1:50-1:500

## Validations



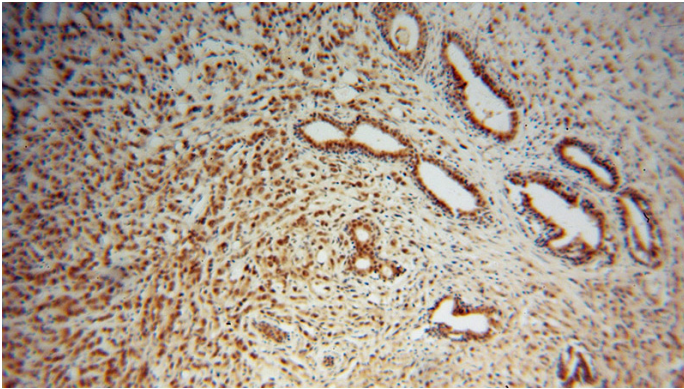
HeLa cells were subjected to SDS PAGE followed by western blot with Catalog No:109618(CSTF2T antibody) at dilution of 1:500



Immunohistochemical of paraffin-embedded human prostate cancer using Catalog No:109618(CSTF2T antibody) at dilution of 1:100 (under 40x lens)

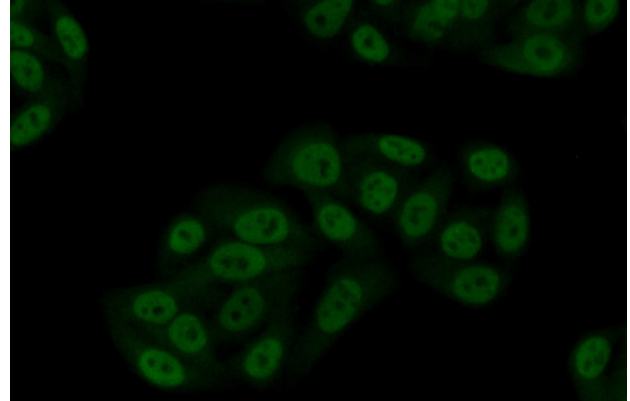
# CSTF2T antibody

Catalog Number: 109618



Immunohistochemical of paraffin-embedded human prostate cancer using Catalog No:109618(CSTF2T antibody) at dilution of 1:100

IP Result of anti-CSTF2T (IP:Catalog No:109618, 4ug; Detection:Catalog No:109618 1:1000) with mouse brain tissue lysate 5200ug.



Immunofluorescent analysis of (10% Formaldehyde) fixed HepG2 cells using Catalog No:109618(CSTF2T Antibody) at dilution of 1:50 and Alexa Fluor 488-conjugated AffiniPure Goat Anti-Rabbit IgG(H+L)

