

# STX1A Polyclonal Antibody



Catalog Number: 165618

## Product name

STX1A Polyclonal Antibody

## Specificity

Mouse, Rat

## Antibody description

Polyclonal antibody to STX1A

## Preparation

Antigen: A synthetic peptide of human STX1A

## Formulation

PBS with 0.02% sodium azide, 50% glycerol, pH7.3.

## Storage

Store at -20°C. Avoid freeze / thaw cycles.

## Clonality

Polyclonal

## Ig Type

Rabbit IgG

## Applications

WB, IHC, IF

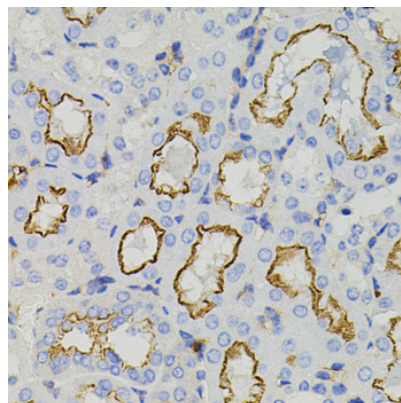
## Dilutions

WB 1:500 - 1:2000

IHC 1:100 - 1:200

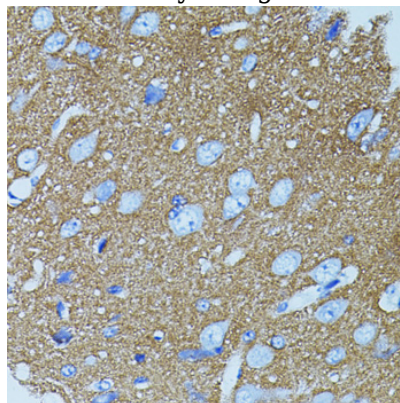
IF 1:50 - 1:200

## Validations



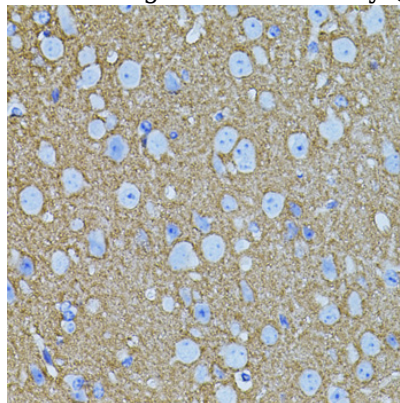
Immunohistochemistry - STX1A Polyclonal Antibody

Immunohistochemistry of paraffin-embedded mouse kidney using STX1A antibody (40x lens).



Immunohistochemistry - STX1A Polyclonal Antibody

Immunohistochemistry of paraffin-embedded rat brain using STX1A antibody (40x lens).



Immunohistochemistry - STX1A Polyclonal Antibody

Immunohistochemistry of paraffin-embedded

# STX1A Polyclonal Antibody



Catalog Number: 165618

---

mouse brain using STX1A antibody (40x lens).