

# Anti-EphB4/Eph Receptor B4 antibody



Catalog Number: 103618

## Product name

Anti-EphB4/Eph Receptor B4 antibody

ELISA, IHC-P

## Immunogen

[Mouse EphB4/Eph Receptor B4 \(His Tag\) recombinant protein](#)

## Dilutions

ELISA: 0.1-0.2 µg/mL

This antibody can be used at 0.1-0.2 µg/mL with the appropriate secondary reagents to detect Mouse EPHB4. The detection limit for Mouse EPHB4 is approximately 0.00245 ng/well.

## Specificity

Mouse EphB4

IHC-P: 0.1-2 µg/mL

## Antibody description

Rabbit polyclonal to EphB4/Eph Receptor B4

## Preparation

Produced in rabbits immunized with purified, recombinant Mouse EphB4 (rM EphB4; P54761-1; Met 1-Ala 539). EphB4 specific IgG was purified by Mouse EphB4 affinity chromatography.

## Formulation

0.2 µm filtered solution in PBS with 5% trehalose

## Storage

This antibody can be stored at 2°C-8°C for one month without detectable loss of activity. Antibody products are stable for twelve months from date of receipt when stored at -20°C to -80°C.

Preservative-Free.

Sodium azide is recommended to avoid contamination (final concentration 0.05%-0.1%). It is toxic to cells and should be disposed of properly. Avoid repeated freeze-thaw cycles.

## Clonality

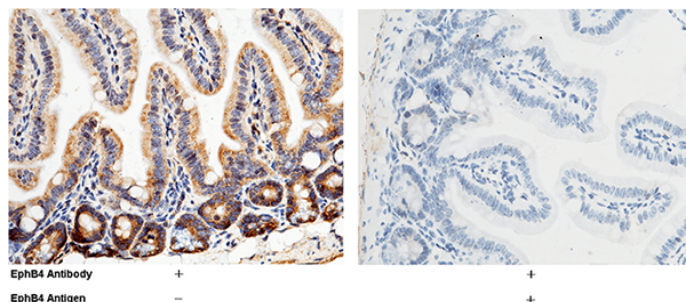
Polyclonal

## Ig Type

Rabbit IgG

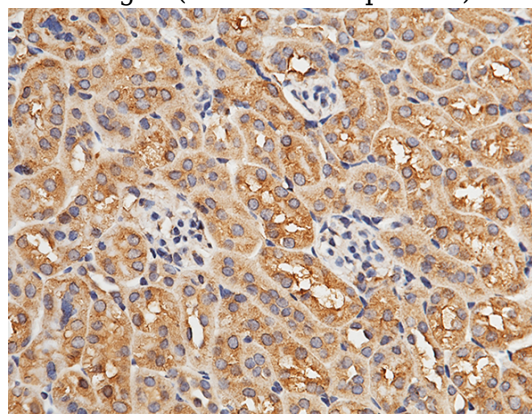
## Applications

## Validations



EphB4 Antibody, Rabbit PAb, Antigen Affinity Purified, Immunohistochemistry

Immunochemical staining of mouse EphB4 in mouse intestine with rabbit polyclonal antibody (1 µg/mL, formalin-fixed paraffin embedded sections). The left panel: tissue incubated with primary antibody; The right panel: tissue incubated with the mixture of primary antibody and antigen (recombinant protein).



EphB4 Antibody, Rabbit PAb, Antigen Affinity Purified, Immunohistochemistry

# Anti-EphB4/Eph Receptor B4 antibody



Catalog Number: 103618

---

Immunochemical staining of mouse EphB4 in  
mouse kidney with rabbit polyclonal antibody (1

µg/mL, formalin-fixed paraffin embedded  
sections).