

Anti-HEXIM1 antibody



Catalog Number: 101618

Product name

Anti-HEXIM1 antibody

IHC-P: 0.1-2 µg/mL

ICC/IF: 0.5-1.5 µg/mL

Specificity

Human HEXIM1

Antibody description

Rabbit polyclonal to HEXIM1

Preparation

Produced in rabbits immunized with a synthetic peptide corresponding to the center region of the Human HEXIM1, and purified by antigen affinity chromatography.

Formulation

0.2 µm filtered solution in PBS

Storage

This antibody can be stored at 2°C-8°C for one month without detectable loss of activity. Antibody products are stable for twelve months from date of receipt when stored at -20°C to -80°C.

Preservative-Free.

Sodium azide is recommended to avoid contamination (final concentration 0.05%-0.1%). It is toxic to cells and should be disposed of properly. Avoid repeated freeze-thaw cycles.

Clonality

Polyclonal

Ig Type

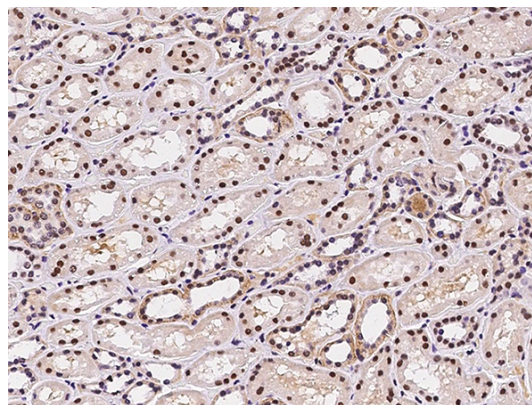
Rabbit IgG

Applications

IHC-P, IF, ICC/IF

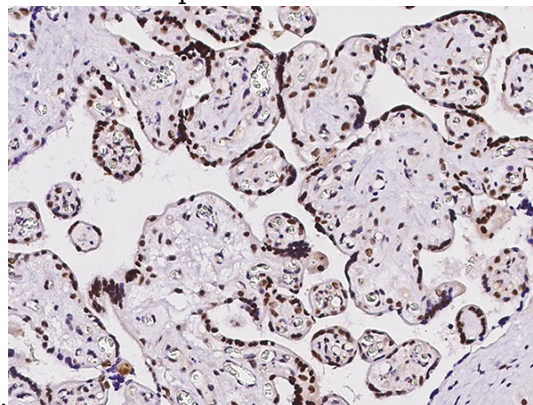
Dilutions

Validations



HEXIM1 Antibody, Rabbit PAb, Antigen Affinity Purified, Immunohistochemistry

Immunochemical staining of human HEXIM1 in human kidney with rabbit polyclonal antibody (0.5 µg/mL, formalin-fixed paraffin embedded



sections).

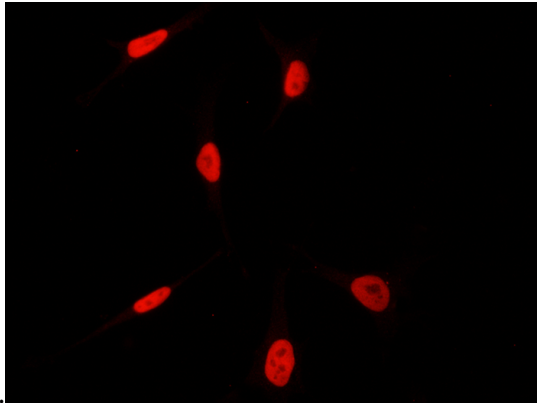
HEXIM1 Antibody, Rabbit PAb, Antigen Affinity Purified, Immunohistochemistry

Immunochemical staining of human HEXIM1 in human placenta with rabbit polyclonal antibody (0.5 µg/mL, formalin-fixed paraffin embedded

Anti-HEXIM1 antibody



Catalog Number: 101618



HEXIM1 Antibody, Rabbit PAb, Antigen Affinity Purified, Immunofluorescence

Immunofluorescence staining of HEXIM1 in HeLa cells. Cells were fixed with 4% PFA, permeabilized with 0.3% Triton X-100 in PBS, blocked with 10% serum, and incubated with rabbit anti-human HEXIM1 polyclonal antibody (1 μ g/ml) at 4°C overnight. Then cells wer

sections).