

Human SETD8/PR-Set7 recombinant protein



Catalog Number: 500218

General Information

Gene Name Synonym

H4-K20-HMTase SETD8; Histone-lysine N-methyltransferase SETD8; Lysine N-methyltransferase 5A; PR/SET domain-containing protein 07; SET domain-containing protein 8

Protein Construction

A DNA sequence encoding the human SETD8 (NP_065115.3) (Lys 195-His 352) was expressed and purified, with two additional amino acids (Gly & Pro) at the N-terminus.

Organism

Human

Expression Host

E. coli

QC Testing

Purity

> 98 % as determined by SDS-PAGE

Endotoxin

Please contact us for more information.

Stability

Samples are stable for up to twelve months from date of receipt at -70°C

Predicted N terminal

Gly

Molecular Mass

The recombinant human SETD8 comprises 160 amino acids and has a predicted molecular mass of 18.2 kDa. It migrates as an approximately 18 kDa band in SDS-PAGE under reducing conditions as predicted.

Formulation

Lyophilized from sterile 20mM Tris, 100mM NaCl, pH 8.0

1. 5 % trehalose and mannitol are added as protectants before lyophilization.
2. Please contact us for any concerns or special requirements.

Usage Guide

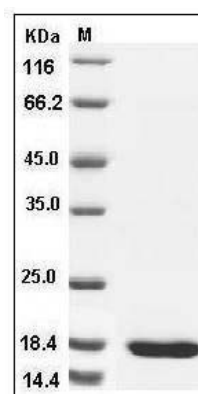
Storage

Store it under sterile conditions at -20°C to -80°C. It is recommended that the protein be aliquoted for optimal storage. Avoid repeated freeze-thaw cycles.

Reconstitution

Adding sterile water, prepare a stock solution of 0.25 mg/ml. Concentration is measured by UV-Vis.

SDS-PAGE



Human SETD8 / PR-Set7 Protein SDS-PAGE